

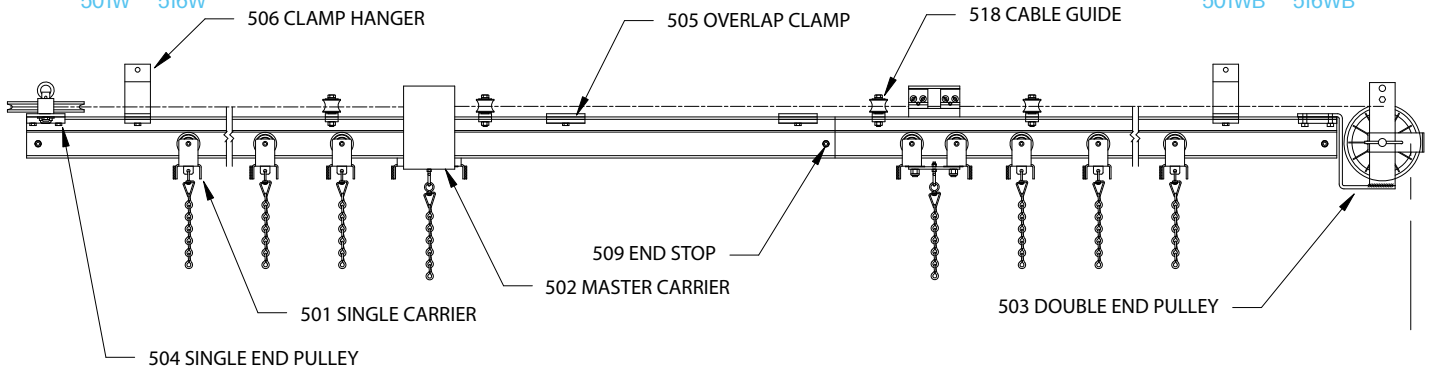
# HEAVY DUTY CURVED TRACK 500 SERIES

## COMPLETE TRACK MODEL NUMBERS

501C 516C  
501S 516S  
501W 516W

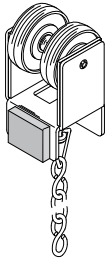
## BLACK COMPLETE TRACK MODEL NUMBERS

501CB 516CB  
501SB 516SB  
501WB 516WB



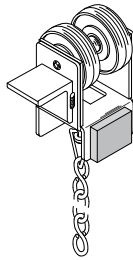
The 500 Series is a heavy-duty track that can be used for straight or curved applications in TV studios, theatres, and many other types of facilities. Curves are typically formed at the factory to suit your project requirements. Walk-along tracks can be curved to virtually any shape or length. Cord operated tracks can be rigged with serpentine or reverse curves. The 500 Series is most often motorized, or manually cord operated for short runs and light weight curtains.

The ease of operation of a 500 Series track is dependent on several factors, including the radius of the curve and whether reverse bends are part of the track layout. In general, the track operates best around a gentle curve. Whenever possible, it is recommended that layouts be designed with radius of 4 feet, or larger. Tighter curves will result in a system that requires additional effort to operate.



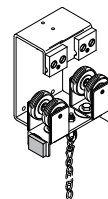
### SINGLE CARRIER

2 urethane-tired sealed ball bearing wheels riveted to plated steel body with heavy-duty hook, swivel and 6" trim chain. Nylon glide strips and rubber bumper reduce friction and noise.  
**No. 501** - Zinc plated.  
**No. 501B** - Black finish.



### TRAILING CARRIER w/ ARM

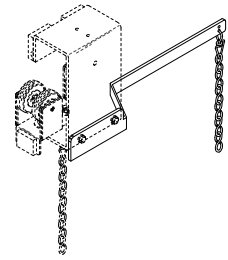
No. 501 urethane-tired sealed ball bearing carrier with arm for use with 526 Carrier Stop.  
**No. 501X** - Zinc Plated.  
**No. 501XB** - Black finish.



### MASTER CARRIER

2 urethane-tired sealed ball bearing wheel assemblies pivot on formed steel body with 2 clamps for anchoring line or cable. 1 pair required for overlapping tracks.

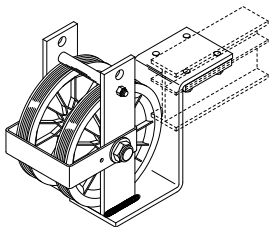
**No. 502** - for 3/8" operating line.  
**No. 502B** - Black finish.  
**No. 502M** - for 3/16" operating cable.  
**No. 502MB** - Black finish.



### MASTER CARRIER EXTENSION ARM KIT

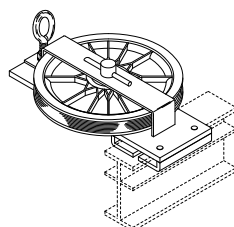
Formed steel bracket to allow curtain to travel under single end pulley.

**No. 502A** - Zinc plated.  
**No. 502AB** - Black finish.



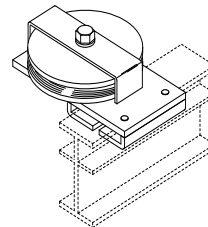
### DOUBLE END PULLEY

6" diameter MD Nylon sheaves with sealed precision ball bearings. Heavy-duty steel housing clamps to top flange of track.  
**No. 503** - grooved for 3/8" operating line.  
**No. 503B** - Black finish.  
**No. 503M** - grooved for 3/16" operating cable.  
**No. 503MB** - Black finish.



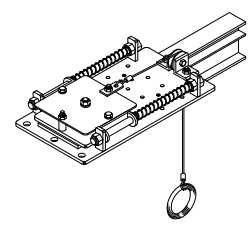
### SINGLE END PULLEY

6" diameter MD Nylon sheave with sealed precision ball bearings. Heavy-duty steel housing clamps to top flange of track.  
**No. 504** - grooved for 3/8" operating line.  
**No. 504B** - Black finish.  
**No. 504M** - grooved for 3/16" operating cable.  
**No. 504MB** - Black finish.



### No. 504A

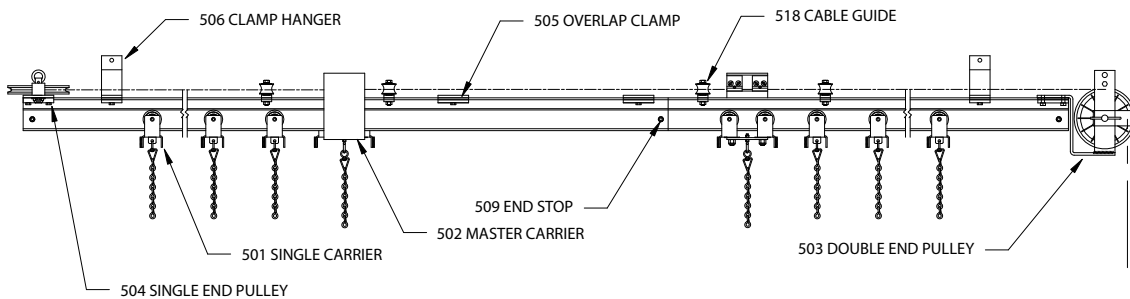
**BLACK SINGLE END PULLEY**  
4" diameter MD Nylon sheave grooved for 3/16" cable with sealed precision ball bearings. Heavy-duty steel housing clamps to top flange of track. Black finish.



### TENSIONING END PULLEY

4" diameter MD Nylon sheave with sealed precision ball bearings grooved for 3/16" cable. Heavy-duty steel housing clamps to top flange of track and provides constant cable tension on large motorized tracks.  
**No. 504T** - Zinc plated.  
**No. 504TB** - Black finish.

# HEAVY DUTY CURVED TRACK 500 SERIES

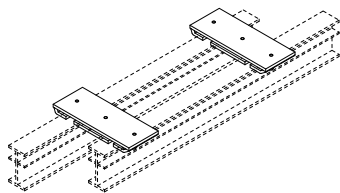


## COMPLETE TRACK MODEL NUMBERS

501C 516C  
501S 516S  
501W 516W

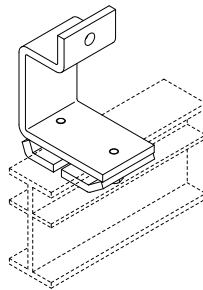
## BLACK COMPLETE TRACK MODEL NUMBERS

501CB 516CB  
501SB 516SB  
501WB 516WB



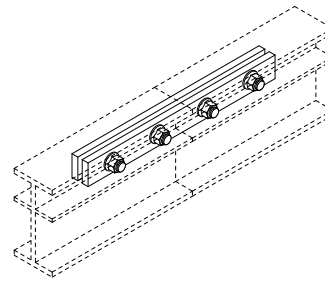
### OVERLAP CLAMP

Formed steel clamps to align track at overlap. 1 set pictured.  
**No. 505** - Zinc plated.  
**No. 505B** - Black finish.



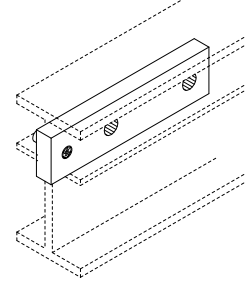
### CLAMP HANGER

Formed steel bracket for suspending track. Track clamps to bracket with offset clips.  
**No. 506** - Zinc plated.  
**No. 506B** - Black finish.



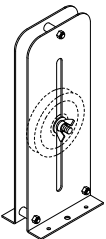
### SPLICE

Aluminum plates align and lock track sections together. Track must be straight at joint. 1 pair pictured.  
**No. 507** - Mill Finish.  
**No. 507B** - Black finish.



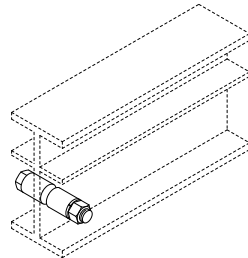
### No. 507FX SPLICE

**DRILL FIXTURE**  
Hardened tool steel drill fixture for field drilling of track for 507 splices.



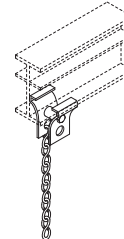
### No. 508, BLACK 6" ADJUST- ABLE FLOOR BLOCK

6" diameter MD Nylon sheave with sealed precision ball bearings in heavy-duty steel housing with 9" vertical adjustment. Grooved to accept 3/8" operating line.



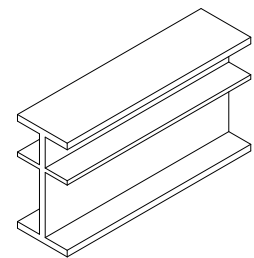
### END STOP

Bolt with steel spacers to prevent carriers from traveling beyond desired location. 2 pair required for overlapping tracks.  
**No. 509** - Zinc plated.  
**No. 509B** - Black finish.



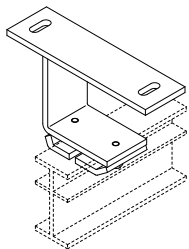
### END STOP/CURTAIN SUPPORT

Formed steel bracket attaches to bottom of track. 6" trim chain to support offstage edge of curtain.  
**No. 509A** - Zinc plated.  
**No. 509AB** - Black finish.



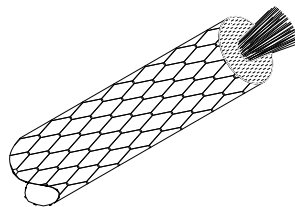
### TRACK

6063-T5 extruded aluminum 1-5/8" wide x 3-1/4" high, .187" thick. 20' and 24' stock lengths.  
**No. 510** - Mill finish.  
**No. 510B** - Class 1 black anodized.



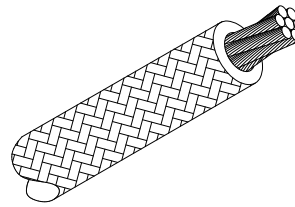
### CEILING HANGER

Formed steel bracket mounts to ceiling. Track clamps to bracket with offset clips.  
**No. 511** - Zinc Plated.  
**No. 511B** - Black finish.



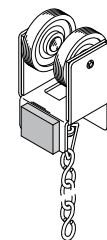
### No. 514 OPERATING LINE

3/8" diameter black polyester braided over Dyneema core for manual operation.



### No. 515 OPERATING CABLE

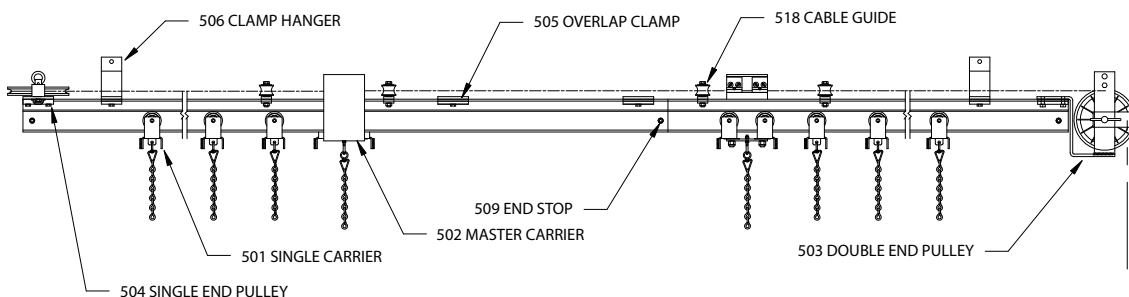
Black polyester jacket braided over 3/32" specialty cord wire rope. For use with motorized tracks.



### SINGLE CARRIER

2 nylon-tired sealed ball bearing wheels riveted to plated steel body with heavy-duty hook, swivel and 6" trim chain. Nylon glide strips and rubber bumper reduce friction and noise.  
**No. 516** - Zinc Plated.  
**No. 516B** - Black finish.

# HEAVY DUTY CURVED TRACK 500 SERIES

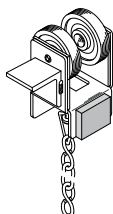


## COMPLETE TRACK MODEL NUMBERS

501C 516C  
501S 516S  
501W 516W

## BLACK COMPLETE TRACK MODEL NUMBERS

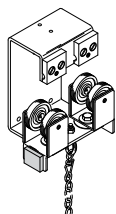
501CB 516CB  
501SB 516SB  
501WB 516WB



### TRAILING CARRIER w/ ARM

No. 516 nylon-tired sealed ball bearing carrier with arm for use with 526 Carrier Stop.

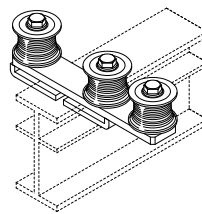
No. 516X - Zinc Plated.  
No. 516XB - Black finish.



### MASTER CARRIER

2 nylon-tired sealed ball bearing wheel assemblies pivot on formed steel body with 2 clamps for anchoring line or cable. 1 pair required for overlapping tracks.

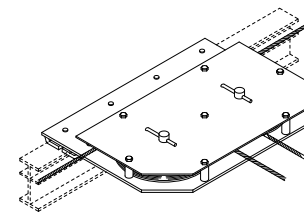
No. 517 - for 3/8" operating line.  
No. 517B - Black finish.  
No. 517M - for 3/16" operating cable.  
No. 517MB - Black finish.



### CABLE GUIDE

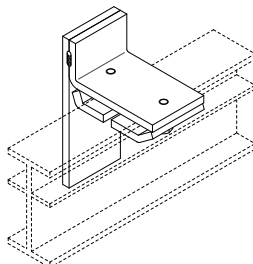
3 MD Nylon rollers mounted to steel bracket. Bracket mounts to track with offset clips. Suggested spacing: 5'. Additional guides required at each curve.

No. 518 - 5/16" shielded ball bearings.  
No. 518B - Black finish.  
No. 519 - 3/8" sealed precision ball bearings.  
No. 519B - Black finish.



### No. 521 CENTER TAKE-OFF PULLEY

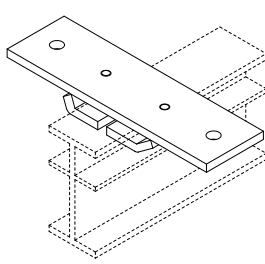
Steel housing contains 6" diameter MD Nylon sheaves with sealed precision ball bearings. Used when operating lines or cable must be turned horizontally.



### CARRIER STOP

Used with 501X or 516X single carriers to keep offstage edge of curtain from traveling past desired position on track.

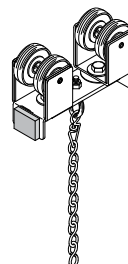
No. 526 - Zinc plated.  
No. 526B - Black finish.



### FLUSH CEILING HANGER

Steel plate mounts flush to ceiling. Track clamps to bracket with offset clips. For use on walk-along tracks only.

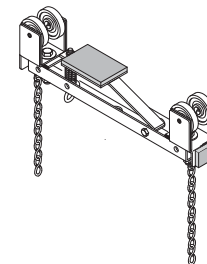
No. 531 - Zinc plated.  
No. 531B - Black Finish.



### WALK-ALONG MASTER CARRIER

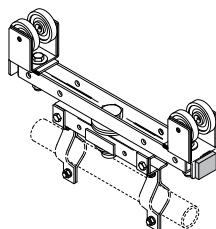
2 single carriers pivot on steel connecting plate with heavy-duty hook, swivel and trim chain.

No. 502W - Urethane-tired wheels.  
No. 502WB - Black finish.  
No. 517W - Nylon-tired wheels  
No. 517WB - Black finish.



### No. 537 BLACK LOCKING MASTER CARRIER

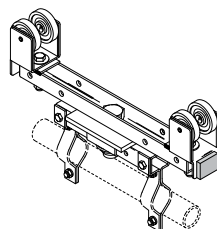
Heavy steel construction with nylon-tired ball bearing wheels and brake to keep master carrier in desired location. Equipped with swivels and trim chains for curtain attachment.



### No. 50 PIVOT DEVICE

Heavy steel construction with nylon-tired ball bearing wheels. Supplied with brackets for 1-3/8" O.D. pipe or tubing (6' max. recommended length). Allows masking draperies to be rotated to any angle.

Working Load Limit: 60 pounds.

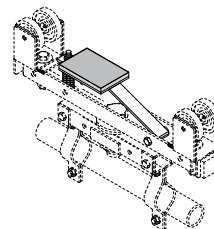


### INDEXING PIVOT DEVICE

Pivot device with special plate to index rotation at 22-1/2 degree increments. Supplied with brackets for 1-3/8" O.D. pipe or tubing (6' max. recommended length).

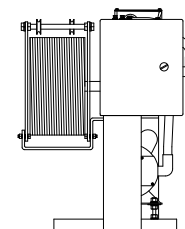
Working Load Limit: 60 pounds.

No. 50X - Zinc plated.  
No. 50XB - Black finish.



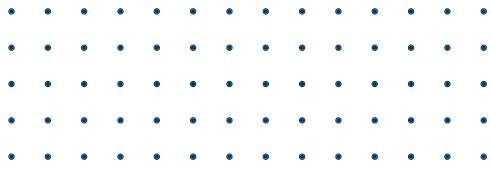
### No. 50BK BRAKE KIT

Spring equipped arm with neoprene pad. Add to pivot device to prevent movement along track.



### No. 454 Curtain Machine

See the Curtain Machine section of the catalog for curtain machines.



# HEAVY DUTY CURVED TRACK 500 SERIES

---

## GENERAL SPECIFICATIONS: HEAVY-DUTY CURVED TRACK

Provide **Model 501C** as manufactured by H & H Specialties Inc., South El Monte, CA.

Track shall be 3-1/4" I-beam, with 1-5/8" top, intermediate, and bottom flanges, extruded from mill finish 6063-T5 aluminum. Track shall be factory curved and provided unspliced in lengths up to 24'.

Suspend track with clamp hanger formed from 1/4" steel. Provide 2' overlap at center, rigidly separated by two overlap clamps. Where lengths exceed 24', connect tracks with 8" long, two-piece splicing clamp of 1/4" steel.

Provide single carriers, spaced on 12" centers, constructed of two urethane-tired sealed ball bearing wheels fastened parallel to formed steel carrier body with heavy-duty hook, swivel and 6" trim chain for attachment of curtain. Attach MD Nylon wear strips at contact points between carriers and track to minimize friction and noise. Install neoprene bumpers to carriers to further reduce noise.

Master carriers shall be two connected urethane-tired sealed ball bearing wheel assemblies pivoting on a steel body with arm extending above track for anchoring operating line with two cord clamps.

Single and double end pulleys shall clamp securely to the top flange of the track and shall be equipped with 6" diameter MD Nylon sheaves grooved for 3/8" operating line. Install two sealed 5/8" precision ball bearings in each sheave. Lock shaft to side plate on head end with 3/16" keeper pin to prevent rotation and install fine-threaded nylon insert lock nut.

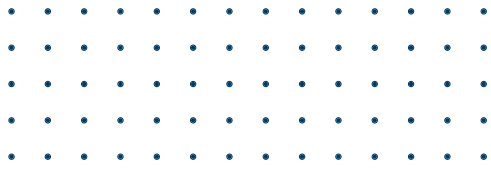
Provide floor block in 12 gauge steel housing containing 6" MD Nylon sheave with two 3/8" sealed precision ball bearings. Sheave axle shall lock at any point within 9" vertical slots to allow tension adjustment of operating line.

Black operating line shall be 3/8" diameter, stretch-resistant rope with spun polyester outer jacket braided over Dyneema core.

Install guide assemblies to direct the operating line along the top of the track, allowing curves in any direction. Assembly shall consist of three MD Nylon guide spools with two shielded ball bearings each mounted to 1/4" steel body and clamped to the top flange of the track.

All steel components shall be zinc plated to resist corrosion.

---



# COMPLETE TRACK COMPONENT GUIDE

## 500 SERIES

---

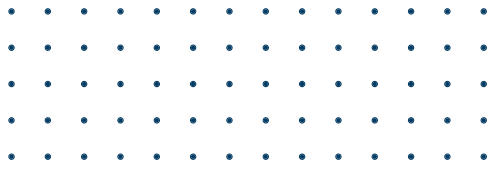
PART No.	DESCRIPTION	501C	501S	501W	516C	516S	516W
501	Urethane B.B. Single Carrier	•	•	•			
502*	Urethane B.B. Master Carrier	•	•				
502WB	Walk-Along Master Carrier			•			
503*	Double End Pulley	•	•		•	•	
504*	Single End Pulley	•	•		•	•	
505	Overlap Clamp	•	•		•	•	
506	Clamp Hanger	***	***	***	***	***	***
507**	Splice	•	•	•	•	•	•
508*	Black Adjustable Floor Block	•	•		•	•	
509	End Stop	•	•	•	•	•	•
510**	Track	•	•	•	•	•	•
511	Ceiling Hanger	•	•		•	•	
514*	3/8" Operating Line	•	•		•	•	
516	Nylon B.B. Single Carrier				•	•	•
517*	Nylon B.B. Master Carrier				•	•	
517W	Walk-Along Master Carrier						•
518	Cable Guide	•	•		•	•	
531	Flush Ceiling Hanger			•			•

\* For motorized applications, the suffix "M" is added to the master carrier and end pulley part numbers, the floor block is eliminated, and #515 cable is substituted for #514 hand line.

\*\* Track lengths and splices supplied as required from stock sizes.

\*\*\* For suspended applications, #506 clamp hanger are substituted for the ceiling hangers. When ordering, please specify whether track is ceiling mounted or suspended.

---



# BLACK COMPLETE TRACK COMPONENT GUIDE

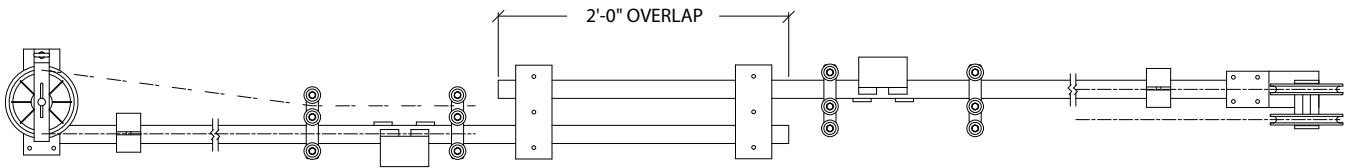
## 500 SERIES

---

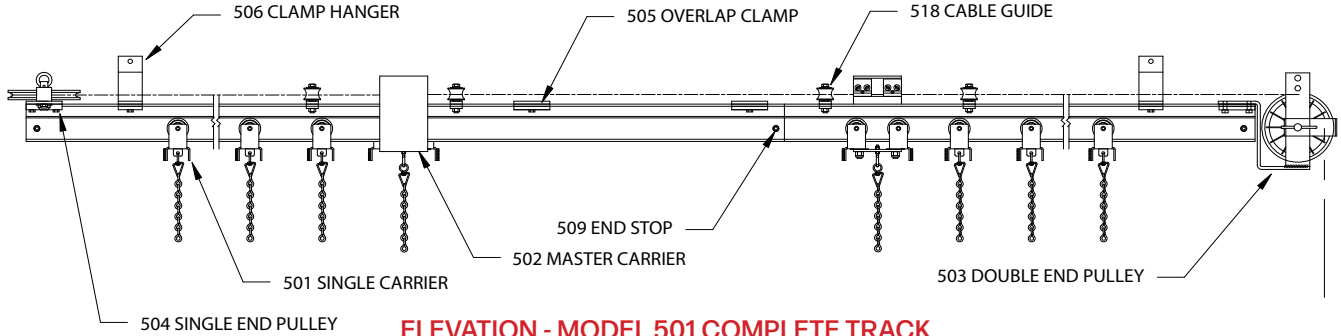
PART No.	DESCRIPTION	501CB	501SB	501WB	516CB	516SB	516WB
501B	Black Urethane B.B. Single Carrier	•	•	•			
502B*	Black Urethane B.B. Master Carrier	•	•				
502WB	Black Walk-Along Master Carrier			•			
503B*	Black Double End Pulley	•	•		•	•	
504B*	Black Single End Pulley	•	•		•	•	
505B	Black Overlap Clamp	•	•		•	•	
506B	Black Clamp Hanger	***	***	***	***	***	***
507B**	Black Splice	•	•	•	•	•	•
508*	Black Adjustable Floor Block	•	•		•	•	
509B	Black End Stop	•	•	•	•	•	•
510B**	Black Track	•	•	•	•	•	•
511B	Black Ceiling Hanger	•	•		•	•	
514*	3/8" Operating Line	•	•		•	•	
516B	Black Nylon B.B. Single Carrier				•	•	•
517B*	Black Nylon B.B. Master Carrier				•	•	
517WB	Black Walk-Along Master Carrier						•
518B	Black Cable Guide	•	•		•	•	
531B	Black Flush Ceiling Hanger			•			•

- \* For motorized applications, the suffix "M" is added to the master carrier and end pulley part numbers, the floor block is eliminated, and #515 cable is substituted for #514 hand line.
  - \*\* Track lengths and splices supplied as required from stock sizes.
  - \*\*\* For suspended applications, #506B clamp hanger are substituted for the ceiling hangers. When ordering, please specify whether track is ceiling mounted or suspended.
-

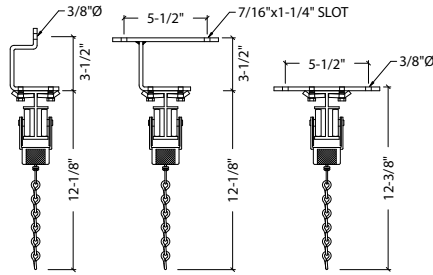
# TRACK 501 SERIES



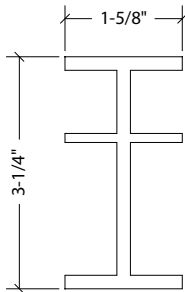
**PLAN - MODEL 501 COMPLETE TRACK**



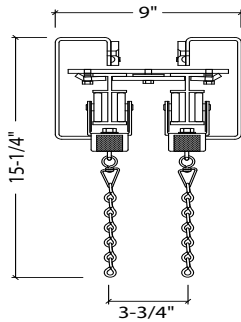
**ELEVATION - MODEL 501 COMPLETE TRACK**



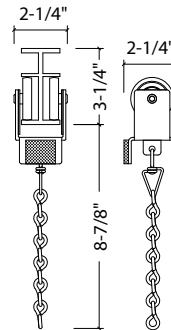
**506, 511, AND 531 TRACK HANGERS**



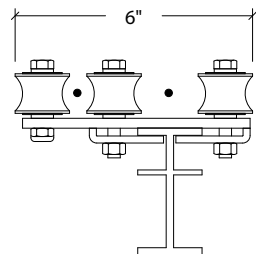
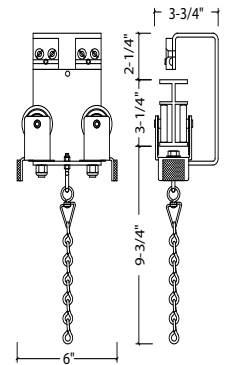
**510 TRACK**



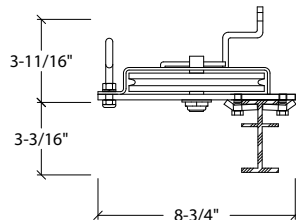
**TRACKS AT CENTER  
OVERLAP**



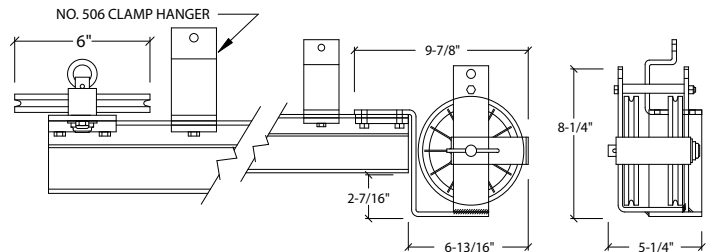
**501 SINGLE CARRIER AND 502 MASTER CARRIER**



**518 CABLE GUIDE**



**504 SINGLE END PULLEY**



**503 DOUBLE END PULLEY**