

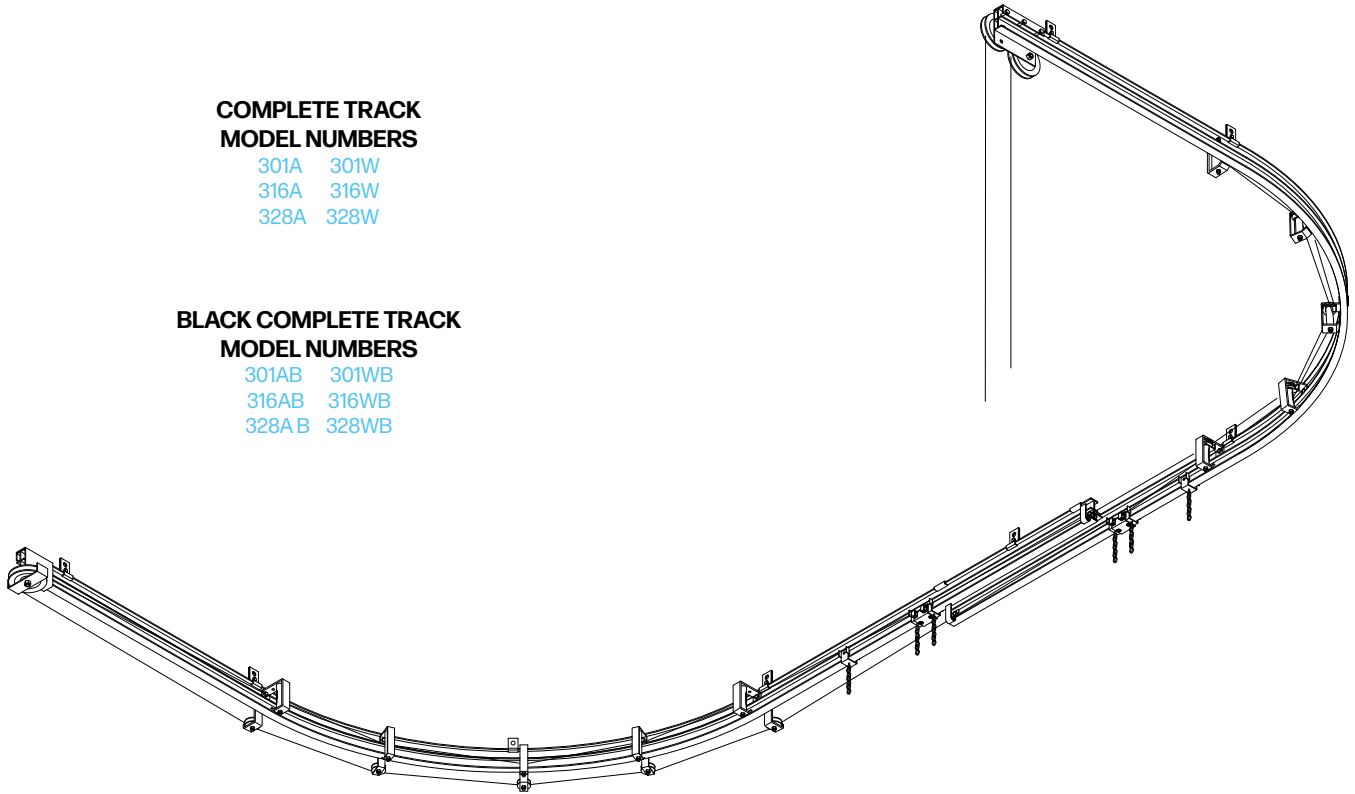
STANDARD DUTY CURVED TRACK 300 SERIES

COMPLETE TRACK MODEL NUMBERS

301A 301W
316A 316W
328A 328W

BLACK COMPLETE TRACK MODEL NUMBERS

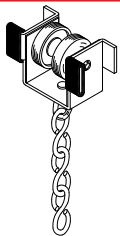
301AB 301WB
316AB 316WB
328A B 328WB



The 300 Series is a versatile track that can be used for straight or curved applications in TV studios, theatres, and many other types of facilities. It can be curved at the factory or on-the-job to suit project requirements. Walk-along tracks can be curved to virtually any shape and length. However, cord operated tracks cannot be rigged with reverse curves and are recommended for lengths up to 60'. Serpentine layouts and long lengths require the use of 500 Series track for cord operation (see page 34).

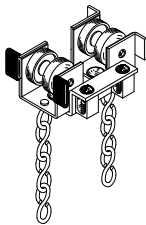
The ease of operation of a 300 Series track is dependant on several factors, including the radius of the curve. In general, the track operates best around gentle curves. Whenever possible, it is recommended that layouts be designed with a radius of 4 feet or larger. Tighter curves will result in a system that requires additional effort to operate.

A variety of track switching devices are available for use with 300 Series Walk-Along tracks. These are illustrated on page 56.



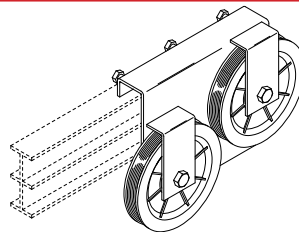
SINGLE CARRIER

2 Delrin wheels riveted to formed steel body with swivel hook and trim chain. Nylon glide strips reduce friction and noise. Supplied with 2 rubber bumpers.
No. 301 - Zinc plated.
No. 301B - Black finish.



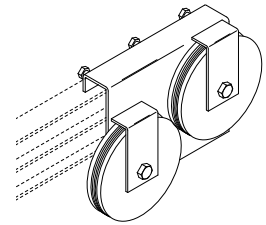
MASTER CARRIER

2 Delrin wheel assemblies with swivel hooks and trim chains pivot on formed steel body. 2 clamps for anchoring operating line or cable. Supplied with 2 rubber bumpers.
1 pair required for overlapping tracks.
No. 302 - Zinc plated.
No. 302B - Black finish.



DOUBLE END PULLEY

4" diameter MD Nylon sheaves with shielded ball bearings. Steel housing clamps to track.
No. 303 - Zinc plated.
No. 303B - Black finish.



No. 303M BLACK DOUBLE END PULLEY

Heavy-duty 4" diameter MD Nylon sheaves with sealed precision ball bearings. Steel housing clamps to track. 3/16" groove for use with motorized tracks.

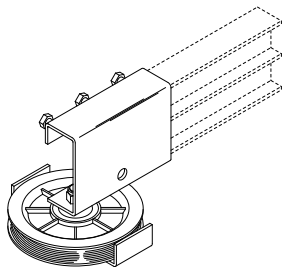
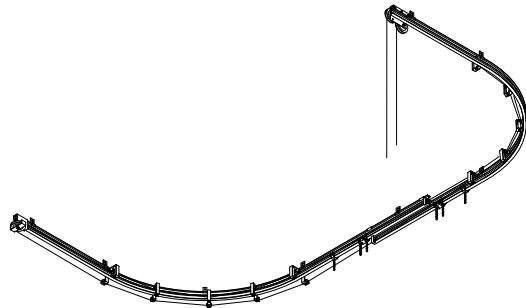
STANDARD DUTY CURVED TRACK 300 SERIES

COMPLETE TRACK MODEL NUMBERS

301A 301W
316A 316W
328A 328W

BLACK COMPLETE TRACK MODEL NUMBERS

301AB 301WB
316AB 316WB
328A B 328WB

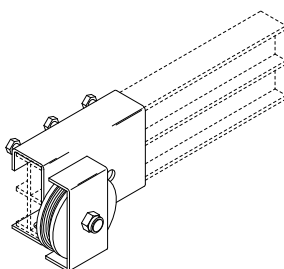


SINGLE END PULLEY

4" diameter MD Nylon sheave with shielded ball bearings. Steel housing clamps to track.

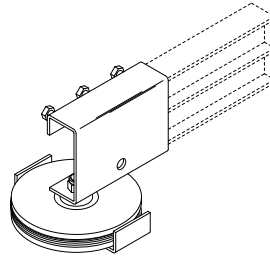
For use with bi-parting tracks.

No. 304 - Zinc plated.
No. 304B - Black finish.



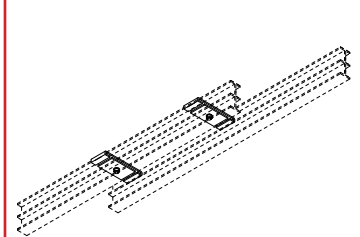
304A BLACK SINGLE END PULLEY

2-1/2" diameter steel sheave with sealed precision ball bearings. Steel housing clamps to track. For one-way draw operation.



304M BLACK SINGLE END PULLEY

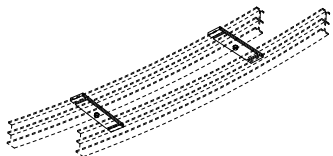
Heavy-duty 4" diameter MD Nylon sheave with sealed precision ball bearings. Steel housing clamps to track. 3/16" groove for use with bi-parting motorized tracks.



OVERLAP CLAMP

Formed steel clamps to align track at overlap. Tracks on 2 11/16" centers for straight overlap. 1 set pictured.

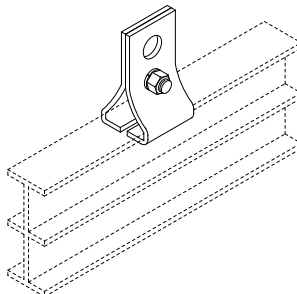
No. 305 straight overlap- Zinc plated.
No. 305B straight overlap- Black finish.



OVERLAP CLAMP

Formed steel clamps to align track at overlap. Tracks on 4 3/4" centers for curved overlap. 1 set pictured.

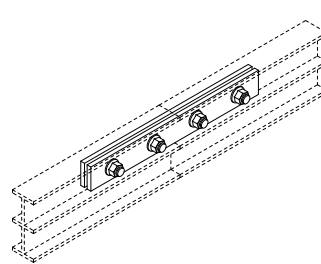
No. 305A curved overlap - Zinc plated.
No. 305AB curved overlap - Black finish.



CLAMP HANGER

Formed steel brackets clamp to track. Adjusts to any position. Suspend track with welded chain or wire rope.

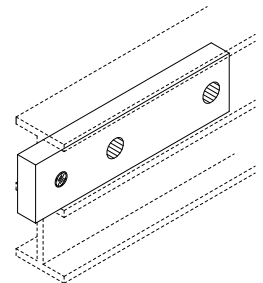
1 pair pictured.
No. 306 - Zinc plated.
No. 306B - Black finish.



SPLICE

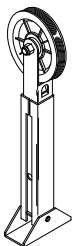
Aluminum plates align and lock track sections together. Track must be straight at joint.

1 pair pictured.
No. 307 - Mill Finish.
No. 307B - Black finish.



No. 307FX SPLICE DRILL FIXTURE

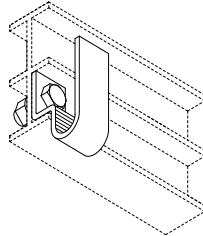
Hardened tool steel drill fixture for field drilling track for 307 splices.



TENSION FLOOR BLOCK

4" diameter MD Nylon sheave with shielded ball bearings. Spring in steel housing maintains line tension.

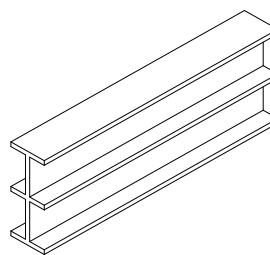
No. 308 - Zinc plated
No. 308B - Black finish.



END STOP & CORD SUPPORT

Formed steel bracket bolts to track to support operating line and prevent carriers from traveling beyond desired location.

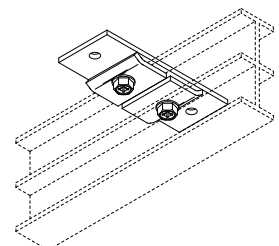
1 pair required for overlapping tracks.
No. 309 - Zinc plated.
No. 309B - Black finish.



TRACK

6063-T5 extruded aluminum 1" wide x 2-1/2" high, .125" thick.

No. 310 - Mill finish. 10' and 20' stock lengths.
No. 310B - Class 1 black anodized. 20' stock length.



CEILING HANGER

Steel plate mounts flush to ceiling. Track clamps to bracket with offset clips.

No. 311 - Zinc plated.
No. 311B - Black finish.

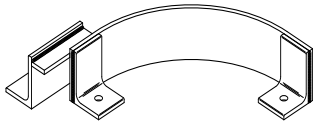
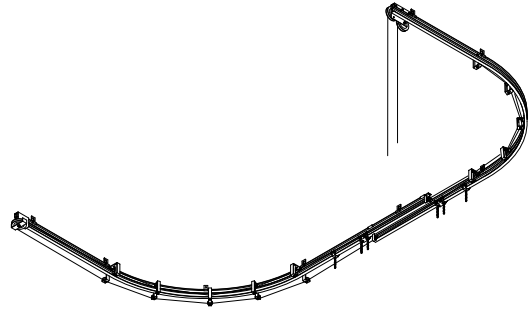
STANDARD DUTY CURVED TRACK 300 SERIES

COMPLETE TRACK MODEL NUMBERS

301A 301W
316A 316W
328A 328W

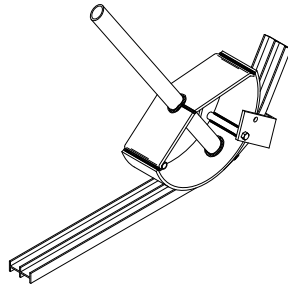
BLACK COMPLETE TRACK MODEL NUMBERS

301AB 301WB
316AB 316WB
328AB 328WB



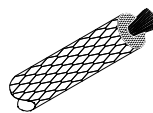
No. 312 BENDING TOOL

Steel form designed for manual bending of aluminum tracks. Must be anchored to floor or stationary table.



No. 313 BENDING TOOL

Heavy steel form designed for manual, on-the-job bending of aluminum tracks.



No. 314 OPERATING LINE

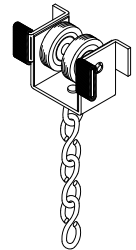
1/4" diameter black polyester braided over Dyneema core for manual operation.



OPERATING CABLE

Black polyester jacket braided over 3/32" specialty cord wire rope. For use with motorized tracks.

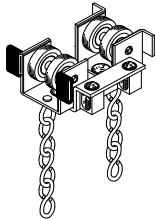
No. 315 - 3/16" diameter



SINGLE CARRIER

Nylon-tired shielded ball bearing wheels riveted to steel body with swivel hook and trim chain. Nylon glide strips reduce friction and noise. Supplied with 2 rubber bumpers.

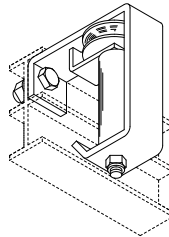
No. 316 - Zinc plated.
No. 316B - Black finish.



MASTER CARRIER

2 Nylon-tired shielded ball bearing wheel assemblies with swivel hooks and trim chains pivot on formed steel body. 2 clamps for anchoring operating line or cable. Supplied with 2 rubber bumpers. 1 pair required for overlapping tracks.

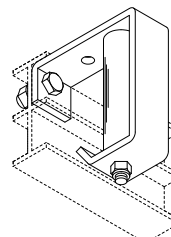
No. 317 - Zinc plated.
No. 317B - Black finish.



DOUBLE SPINDLE

Formed steel housing contains two ball bearing guides for operating line to follow curve. Mount to inside of curve on double end pulley section of track for bi-parting tracks.

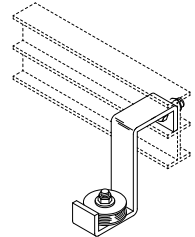
No. 318 - Zinc plated.
No. 318B - Black finish.



SINGLE SPINDLE

Formed steel housing contains one ball bearing guide for operating line to follow track curve. Mount to inside of curve on single end pulley section of track for bi-parting tracks.

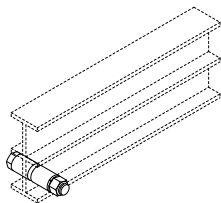
No. 319 - Zinc plated.
No. 319B - Black finish.



OUTSIDE IDLER

Formed steel housing contains one ball bearing guide for operating line to follow track curve. Mount to outside of curve on single end pulley section of track for bi-parting tracks.

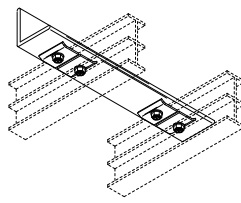
No. 320 - Zinc plated.
No. 320B - Black finish.



END STOP

Bolt with steel spacers to prevent carriers from traveling beyond desired location. For use with walk-along tracks.

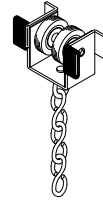
No. 321 - Zinc plated.
No. 321B - Black finish.



BLACK DOUBLE TRACK HANGER

Angle bracket with mounting clips to secure double tracks together in studios and small theatres.

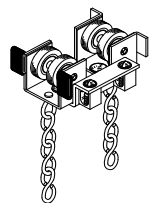
No. 326, 6" track spacing.
No. 327, 8" track spacing.



SINGLE CARRIER

Urethane-tired shielded ball bearing wheels riveted to formed steel body with swivel hook and trim chain. Nylon glide strips reduce friction and noise. Supplied with 2 rubber bumpers.

No. 328 - Zinc plated.
No. 328B - Black finish.



MASTER CARRIER

2 Urethane-tired shielded ball bearing wheel assemblies with swivel hook and trim chain pivot on formed steel body. Supplied with 2 clamps for anchoring operating line or cable. Supplied with 2 rubber bumpers. 1 pair required for overlapping tracks.

No. 329 - Zinc plated.
No. 329B - Black finish.

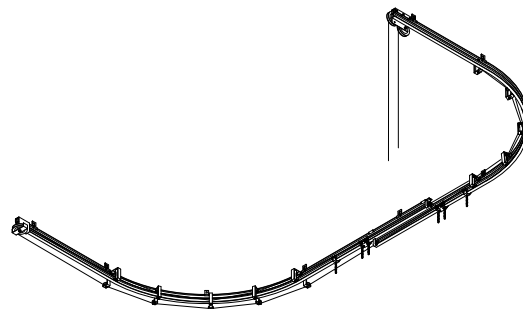
STANDARD DUTY CURVED TRACK 300 SERIES

COMPLETE TRACK MODEL NUMBERS

301A 301W
316A 316W
328A 328W

BLACK COMPLETE TRACK MODEL NUMBERS

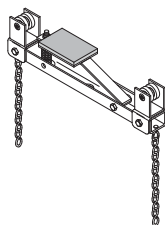
301AB 301WB
316AB 316WB
328AB 328WB



TRIM CHAIN

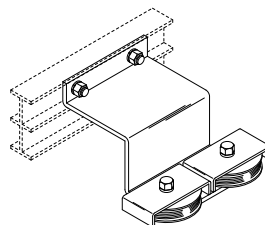
3 or 6 links No.10 single jack chain added to carriers to provide 3" or 6" of curtain height adjustment.

No. 335 - 3" Zinc plated.
No. 335B - 3" Black finish.
No. 335-6 - 6" Zinc plated.
No. 335B-6 - 6" Black finish.



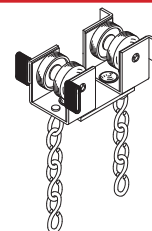
No. 337 BLACK LOCKING MASTER CARRIER

Heavy steel construction with nylon-tired shielded ball bearing wheels and brake to keep master carrier in desired location. Equipped with swivels and trim chains for curtain attachment. Note: All carriers used with this device must have a trim chain of 6" total length.



No. 341 CENTER TAKE-OFF

Special steel housing contains 2-1/2" diameter MDNylon sheaves with shielded ball bearings. Used when operating lines must be turned horizontally toward curtain machine or mule block.



WALK-ALONG MASTER CARRIER

2 Delrin wheel assemblies with swivel hook and trim chain pivot on steel connecting plate. Supplied with 2 rubber bumpers. 1 pair recommended for each walk-along curtain.

No. 342 - Zinc plated.
No. 342B - Black finish.

WALK-ALONG OVERLAP MASTER CARRIER

Overlap arm mounted to modified 302 master to provide curtain overlap on single track operation. 1 pair recommended for each walk-along curtain.

No. 342A - Zinc plated.
No. 342AB - Black finish.

WALK-ALONG MASTER CAR- RIER

2 Nylon-tired shielded ball bearing wheel assemblies with swivel hook and trim chain pivot on steel connecting plate. Supplied with 2 rubber bumpers. 1 pair recommended for each walk-along curtain.

No. 347 - Zinc plated.
No. 347B - Black finish.

WALK-ALONG OVERLAP MASTER CARRIER

Overlap arm mounted to modified 317 master to provide curtain overlap on single track operation. 1 pair recommended for each walk-along curtain.

No. 347A - Zinc plated.
No. 347AB - Black finish.

WALK-ALONG MASTER CARRIER

2 Urethane-tired shielded ball bearing wheel assemblies with swivel hook and trim chain pivot on steel connecting plate. Supplied with 2 rubber bumpers. 1 pair recommended for each walk-along curtain.

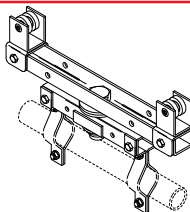
No. 349 - Zinc plated.
No. 349B - Black finish.



90 DEGREE TRACK CURVE

Factory bent with ends punched for splices. Each end has 12" straight section before curve begins for splicing.

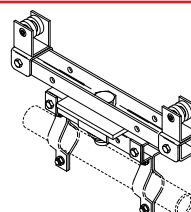
No. 351 - 3'-4" radius
No. 352 - 4'-0" radius
No. 353 - 4'-8" radius
No. 354 - 5'-4" radius
No. 355 - 6'-0" radius
No. 356 - 6'-8" radius
No. 351B - 3'-4" radius,
Class 1 black anodized.
No. 352B - 4'-0" radius,
Class 1 black anodized.



PIVOT DEVICE

Heavy steel construction with nylon-tired shielded ball bearing wheels. Supplied with brackets for 1-3/8" O.D. pipe or tubing (6' max. recommended length). Allows masking draperies to be rotated to any angle.

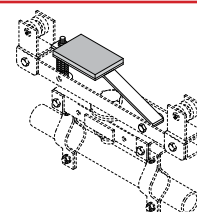
Working Load Limit: 60 pounds.
No. 30 - Zinc plated.
No. 30B - Black finish



INDEXING PIVOT DEVICE

Pivot device with special plate to index rotation at 22-1/2 degree increments. Supplied with brackets for 1-3/8" O.D. pipe or tubing (6' max. recommended length).

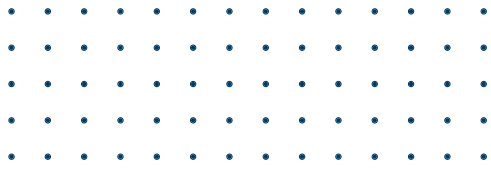
Working Load Limit: 60 pounds.
No. 30X - Zinc plated.
No. 30XB - Black finish.



BRAKE KIT

Spring equipped arm with neoprene pad. Add to pivot device to prevent undesired movement along track.

No. 30BK - Zinc plated.
No. 30BKB - Black finish.



TRACK 300 SERIES

GENERAL SPECIFICATIONS: STANDARD DUTY WALK-ALONG TRACK

Provide **Model 301W** as manufactured by H & H Specialties Inc., South El Monte, CA.

Track shall be 2-1/2" I-beam, with 1" top, intermediate, and bottom flanges, extruded from mill finish 6063-T5 aluminum. Provide unspliced in lengths up to 24'.

Suspend track with two-piece clamp hanger formed from 11 gauge steel. Install end stops at each track end. Where lengths exceed 24', connect tracks with 8" long, two-piece splicing clamp.

Provide single carriers, spaced on 12" centers, constructed of two Delrin wheels riveted to formed steel carrier body with swivel hook and 3" trim chain for attachment of curtain. Attach Nylon wear strips at contact points between carriers and track to minimize friction and noise. Install two neoprene bumpers between carriers to further reduce noise.

Master carriers shall be two connected Delrin wheel assemblies pivoting on a steel body with swivel hooks and 3" trim chains.

All steel components shall be zinc plated to resist corrosion.

GENERAL SPECIFICATIONS: STANDARD DUTY CURVED TRACK

Provide **Model 301A** as manufactured by H & H Specialties Inc., South El Monte, CA.

Track shall be 2-1/2" I-beam, with 1" top, intermediate, and bottom flanges, extruded from mill finish 6063-T5 aluminum. Provide unspliced in lengths up to 24'.

Suspend track with two-piece clamp hanger formed from 11 gauge steel. Provide 2' overlap at center, rigidly separated by two overlap clamps. Install end stop with cord support at each track end. Where lengths exceed 24', connect tracks with 8" long, two-piece splicing clamp.

Provide single carriers, spaced on 12" centers, constructed of two Delrin wheels riveted to formed steel carrier body with swivel hook and 3" trim chain for attachment of curtain. Attach Nylon wear strips at contact points between carriers and track to minimize friction and noise. Install two neoprene bumpers between carriers to further reduce noise.

Master carriers shall be two connected Delrin wheel assemblies with swivel hooks and 3" trim chains. Wheel assemblies pivot on a steel body with two cord clamps for anchoring operating line.

Single and double end pulleys shall clamp securely to the track and shall contain 4" diameter sheaves enclosed in steel housings to prevent operating line from escaping the grooves. Sheaves shall be MD Nylon molded around shielded and greased ball bearings.

Provide spring tension floor block in 3-piece, 14 gauge steel housing containing 4" MD Nylon shielded ball bearing sheave.

Black operating line shall be 1/4" diameter, stretch-resistant rope with spun polyester outer jacket braided over Dyneema core. Install ball bearing idlers and spindles where necessary to guide operating line around inside and outside of track curves.

All steel components shall be zinc plated to resist corrosion.



TRACK 300 SERIES

GENERAL SPECIFICATIONS: (Continued)

Provide **Model 316A** as manufactured by H & H Specialties Inc., South El Monte, CA.

Track shall be 2-1/2" I-beam, with 1" top, intermediate, and bottom flanges, extruded from mill finish 6063-T5 aluminum. Provide unspliced in lengths up to 24'.

Suspend track with two-piece clamp hanger formed from 11 gauge steel. Provide 2' overlap at center, rigidly separated by two overlap clamps. Install end stop with cord support at each track end. Where lengths exceed 24', connect tracks with 8" long, two-piece splicing clamp.

Provide single carriers, spaced on 12" centers, constructed of two nylon-tired shielded ball bearing wheels riveted to formed steel carrier body with swivel hook and 3" trim chain for attachment of curtain. Attach Nylon wear strips at contact points between carriers and track to minimize friction and noise. Install two neoprene bumpers between carriers to further reduce noise.

Master carriers shall be two connected nylon-tired ball bearing wheel assemblies with swivel hooks and 3" trim chains. Wheel assemblies pivot on a steel body with two cord clamps for anchoring operating line.

Single and double end pulleys shall clamp securely to the track and shall contain 4" diameter sheaves enclosed in steel housings to prevent operating line from escaping the grooves. Sheaves shall be MD Nylon molded around shielded and greased ball bearings.

Provide spring tension floor block in 3-piece, 14 gauge steel housing containing 4" MD Nylon shielded ball bearing sheave.

Black operating line shall be 1/4" diameter, stretch-resistant rope with spun polyester outer jacket braided over Dyneema core. Install ball bearing idlers and spindles where necessary to guide operating line around inside and outside of track curves.

All steel components shall be zinc plated to resist corrosion.

Provide **Model 328A** as manufactured by H & H Specialties Inc., South El Monte, CA.

Track shall be 2-1/2" I-beam, with 1" top, intermediate, and bottom flanges, extruded from mill finish 6063-T5 aluminum. Provide unspliced in lengths up to 24'.

Suspend track with two-piece clamp hanger formed from 11 gauge steel. Provide 2' overlap at center, rigidly separated by two overlap clamps. Install end stop with cord support at each track end. Where lengths exceed 24', connect tracks with 8" long, two-piece splicing clamp.

Provide single carriers, spaced on 12" centers, constructed of two Urethane-tired wheels riveted to formed steel carrier body with swivel hook and 3" trim chain for attachment of curtain. Attach Nylon wear strips at contact points between carriers and track to minimize friction and noise. Install two neoprene bumpers between carriers to further reduce noise.

Master carriers shall be two connected Neoprene-tired wheel assemblies with swivels and 3" trim chains. Wheel assemblies pivot on a steel body with two cord clamps for anchoring operating line.

Single and double end pulleys shall clamp securely to the track and shall contain 4" diameter sheaves enclosed in steel housings to prevent operating line from escaping the grooves. Sheaves shall be MD Nylon molded around shielded and greased ball bearings.

Provide spring tension floor block in 3-piece, 14 gauge steel housing containing 4" MD Nylon shielded ball bearing sheave.

Black operating line shall be 1/4" diameter, stretch-resistant rope with spun polyester outer jacket braided over Dyneema core. Install ball bearing idlers and spindles where necessary to guide operating line around inside and outside of track curves.

All steel components shall be zinc plated to resist corrosion.

W

COMPLETE TRACK COMPONENT GUIDE

300 SERIES

PART No.	DESCRIPTION	301A	301W	316A	316W	328A	328W
301	Single Carrier	•	•				
302	Master Carrier	•					
303	Double End Pulley	•		•		•	
304	Single End Pulley	•		•		•	
305	Overlap Clamp	•		•		•	
306	Clamp Hanger	•	•	•	•	•	•
307**	Splice	•	•	•	•	•	•
308	Tension Floor Block	•		•		•	
309	End Stop & Cord Support	•		•		•	
310**	Track	•	•	•	•	•	•
311	Ceiling Hanger	*	*	*	*	*	*
314	1/4" Operating Line	•		•		•	
316	Nylon B.B. Single Carrier			•	•		
317	Nylon B.B. Master Carrier			•			
318	Double Spindle	***		***		***	
319	Single Spindle	***		***		***	
320	Outside idler	***		***		***	
321	End Stop		•		•		•
328	Urethane B.B. Single Carrier					•	•
329	Urethane B.B. Master Carrier					•	
342	Master Carrier		•				
347	Nylon B.B. Master Carrier				•		
349	Urethane B.B. Master Carrier						•

* For ceiling mounted applications, No. 311 provided in lieu of No. 306 Clamp Hanger. When ordering, please specify whether track is ceiling mounted or suspended.

** Track lengths and splices supplied as required from stock sizes.

*** No. 318, 319, and 320 must be ordered as additional accessories. Quantity is determined by length of track and configuration of curve.

BLACK COMPLETE TRACK COMPONENT GUIDE

300 SERIES

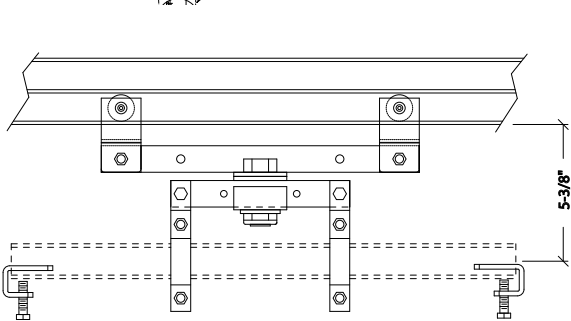
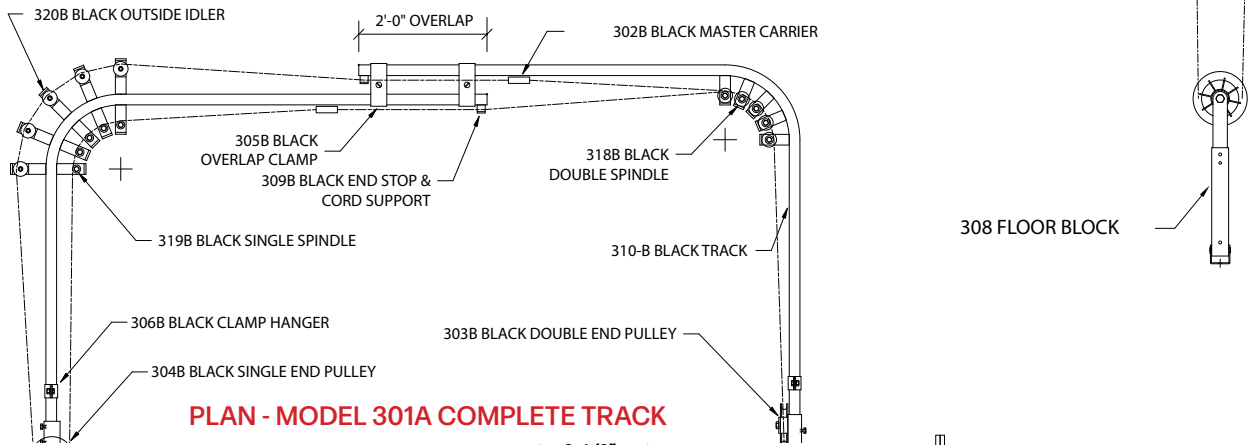
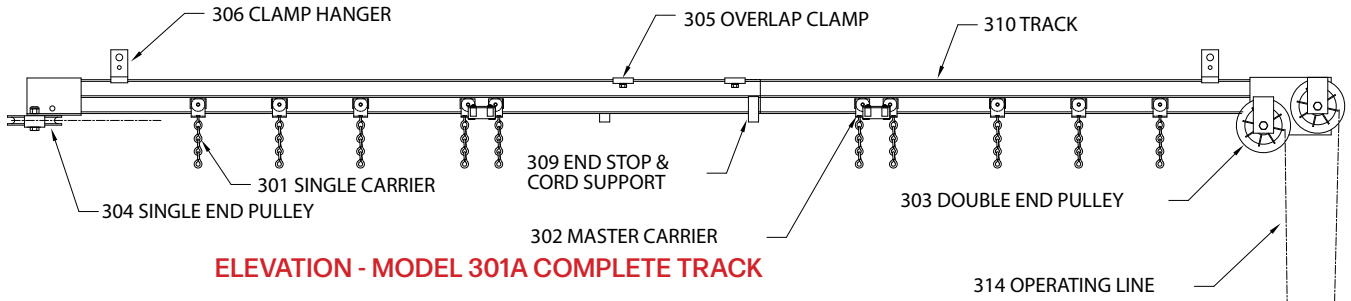
PART No.	DESCRIPTION	301AB	301WB	316AB	316WB	328AB	328WB
301B	Black Single Carrier	•	•				
302B	Black Master Carrier	•					
303B	Black Double End Pulley	•		•		•	
304B	Black Single End Pulley	•		•		•	
305B	Black Overlap Clamp	•		•		•	
306B	Black Clamp Hanger	•	•	•	•	•	•
307B**	Black Splice	•	•	•	•	•	•
308B	Black Tension Floor Block	•		•		•	
309B	Black End Stop & Cord Support	•		•		•	
310-20B**	Black Track	•	•	•	•	•	•
311B	Black Ceiling Hanger	*	*	*	*	*	*
314	1/4" Operating Line	•		•		•	
316B	Black Nylon B.B. Single Carrier			•	•		
317B	Black Nylon B.B. Master Carrier			•			
318B	Black Double Spindle	***		***		***	
319B	Black Single Spindle	***		***		***	
320B	Black Outside idler	***		***		***	
321B	Black End Stop		•		•		•
328B	Black Urethane B.B. Single Carrier					•	•
329B	Black Urethane B.B. Master Carrier					•	
342B	Black Master Carrier		•				
347B	Black Nylon B.B. Master Carrier				•		
349B	Black Urethane B.B. Master Carrier						•

* For ceiling mounted applications, No. 311B provided in lieu of No. 306B Black Clamp Hanger. When ordering, please specify whether track is ceiling mounted or suspended.

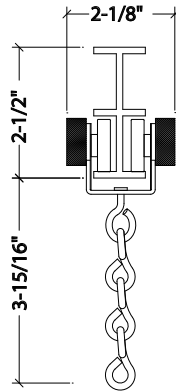
** Track lengths and splices supplied as required from stock sizes.

***No. 318B, 319B, and 320B must be ordered as additional accessories. Quantity is determined by length of track and configuration of curve.

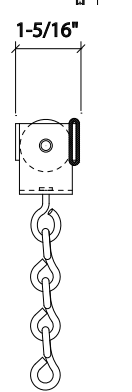
TRACK 300 SERIES



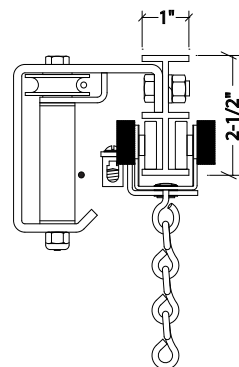
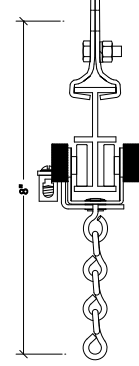
30 PIVOT DEVICE



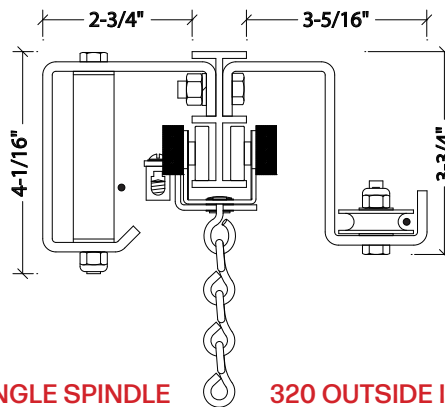
301 SINGLE CARRIER



302 MASTER CARRIER



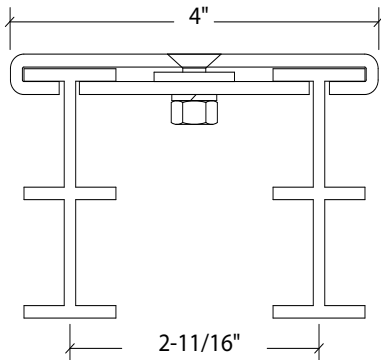
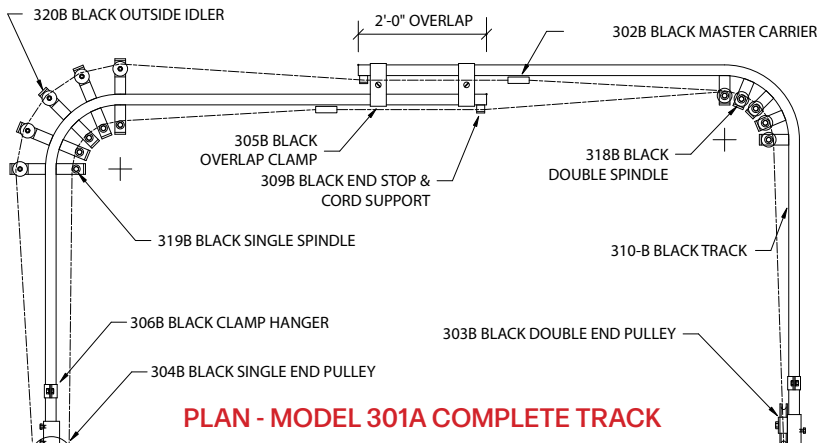
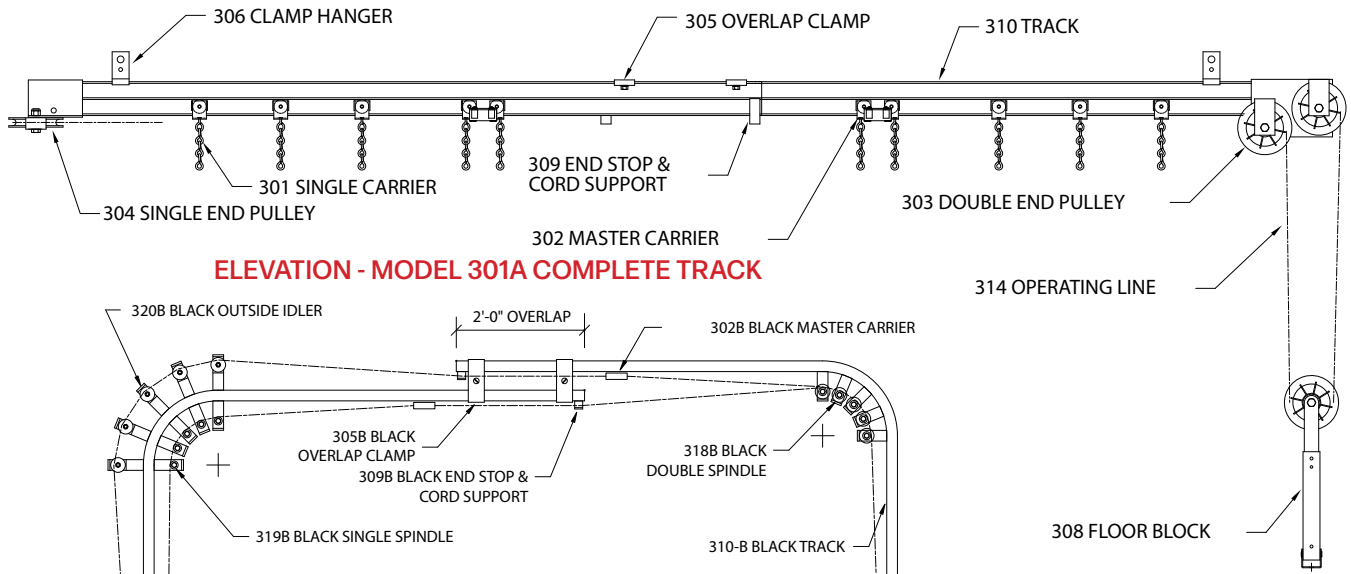
318 DOUBLE SPINDLE



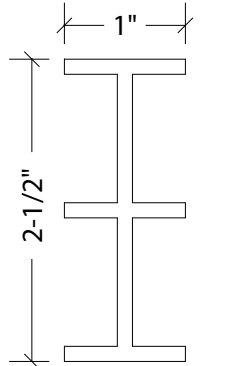
319 SINGLE SPINDLE

320 OUTSIDE IDLER

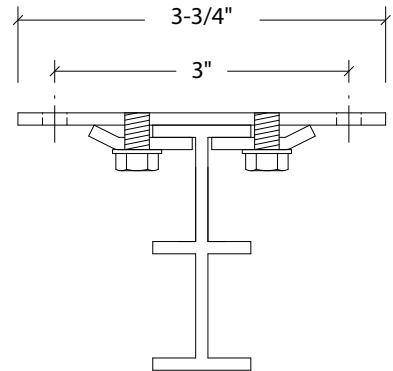
TRACK 300 SERIES



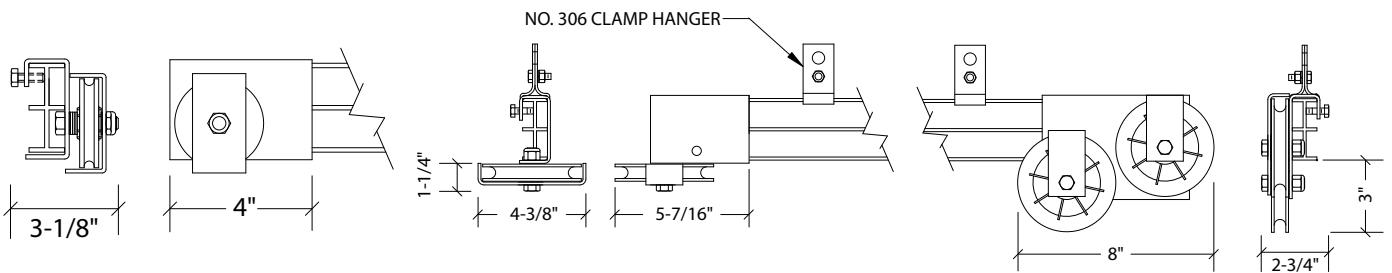
**TRACKS AT CENTER
OVERLAP 305 & 305B**



310 TRACK TRACK



311 CEILING CLAMP

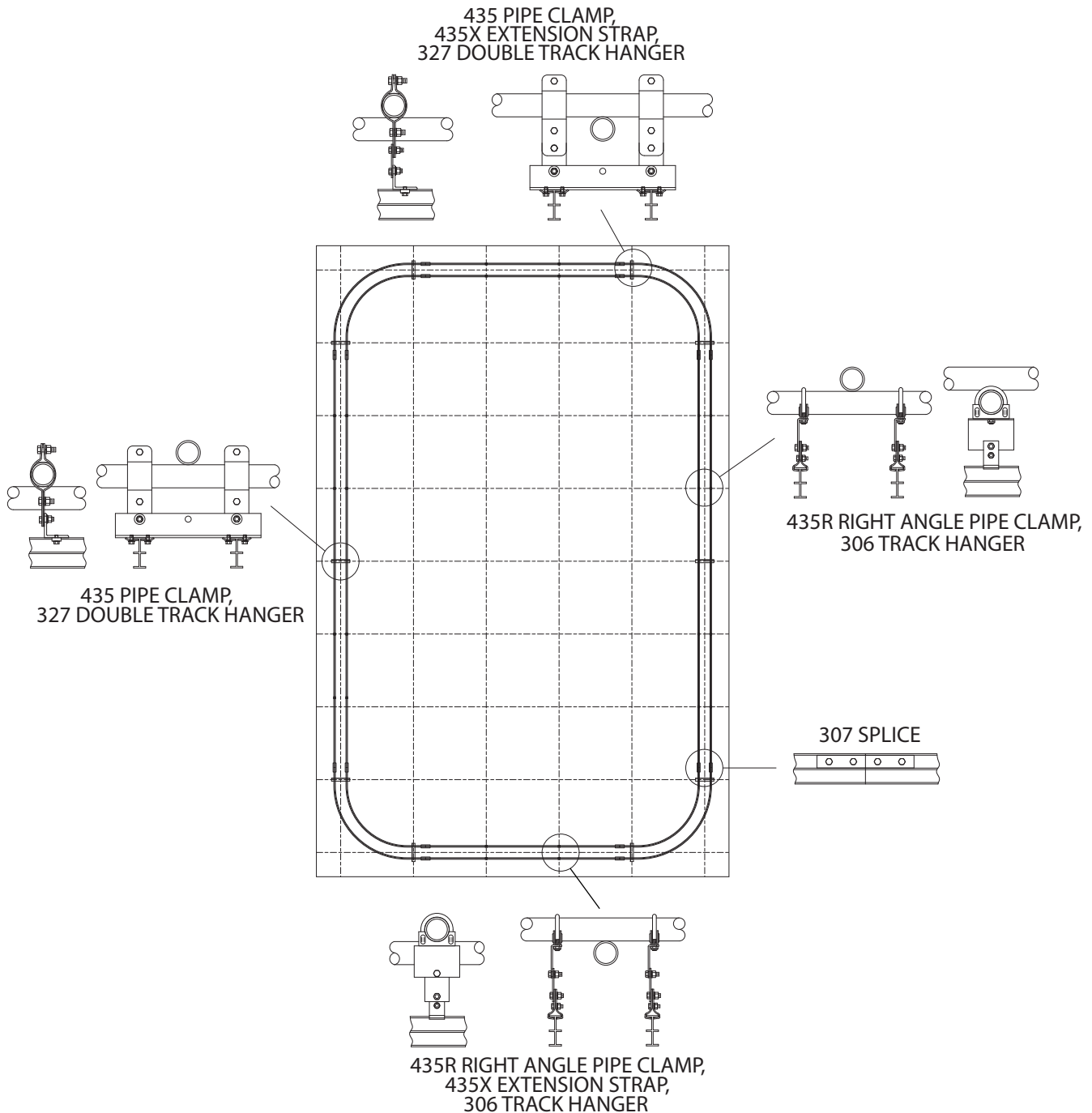


304A SINGLE END PULLEY

304 SINGLE END PULLEY

303 DOUBLE END PULLEY

PIPE GRID MOUNTED WALK-ALONG TRACK
300 SERIES



NOTE: THIS DRAWING IS SCHEMATIC IN NATURE
SHOWING TYPICAL USE OF ATTACHMENT
HARDWARE TO MOUNT TO A PIPE GRID.
ADDITIONAL SUPPORT MAY BE REQUIRED
TO SUPPORT THE CURVES.