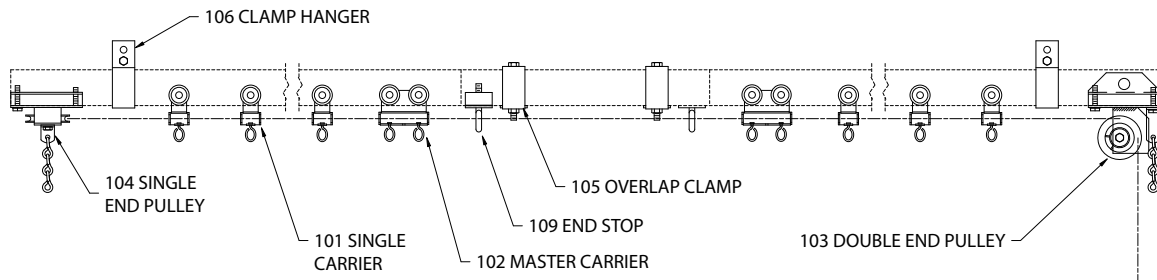


# STANDARD DUTY STRAIGHT TRACK 100 SERIES

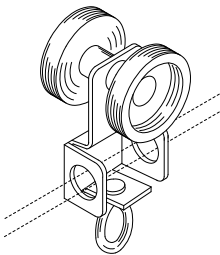


## COMPLETE TRACK MODEL NUMBERS

101A 116A  
101S 116S  
101W 116W

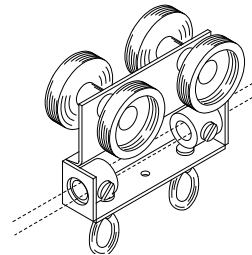
## BLACK COMPLETE TRACK MODEL NUMBERS

101SB 116SB  
101WB 116WB



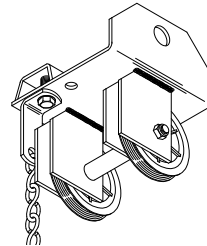
### SINGLE CARRIER

2 polyethylene wheels riveted to plated steel body with swivel hook. Rubber bumpers may be ordered separately.  
**No. 101** - Zinc plated.  
**No. 101B** - Black finish.



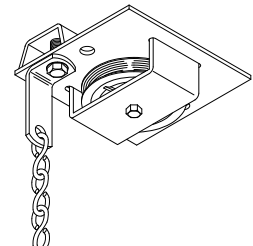
### MASTER CARRIER

4 polyethylene wheels riveted to steel body with 2 swivel hooks. Supplied with 2 clamps for anchoring operating line or cable. 1 pair required for overlapping tracks.  
**No. 102** - Zinc plated.  
**No. 102B** - Black finish.



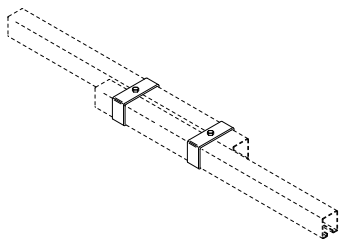
### DOUBLE END PULLEY

2 1/2" diameter MD Nylon sheaves with shielded ball bearings. Steel housing clamps to underside of track. Chain bracket for securing offstage curtain edge.  
**No. 103** - Zinc plated.  
**No. 103B** - Black finish.



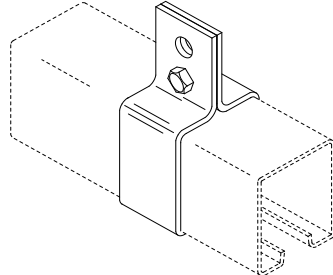
### SINGLE END PULLEY

2 1/2" diameter MD Nylon sheave with shielded ball bearing. Steel housing clamps to underside of track. Chain bracket for securing offstage curtain edge.  
**No. 104** - Zinc plated.  
**No. 104B** - Black finish.



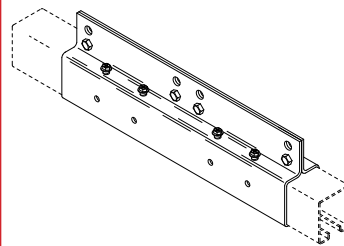
### OVERLAP CLAMP

Formed steel clamps to align track at overlap. 1 set pictured.  
**No. 105** - Zinc plated.  
**No. 105B** - Black finish.



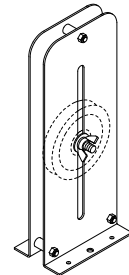
### CLAMP HANGER

Formed steel brackets clamp to track. Adjusts to any position. Suspend track with welded chain or wire rope. 1 pair pictured.  
**No. 106** - Zinc plated.  
**No. 106B** - Black finish.



### SPLICE

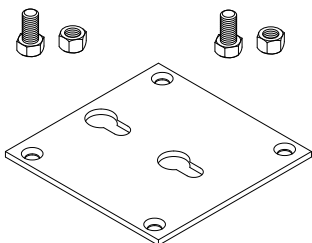
Formed steel brackets align and lock track sections together. 1 pair pictured.  
**No. 107** - Zinc plated.  
**No. 107B** - Black finish.



### No. 108 BLACK

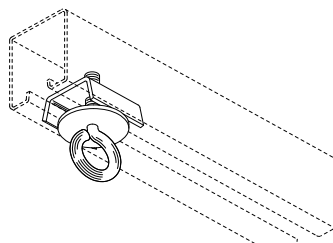
### ADJUSTABLE FLOOR BLOCK

4" diameter MD Nylon sheave with shielded ball bearing in steel housing. 9" vertical adjustment.



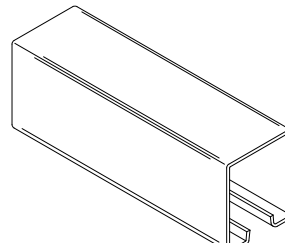
### No. 108DK BLACK DETACHABLE FLOOR BLOCK KIT

7 gauge steel plate with hardware for use with No. 108 Adjustable Floor Block for quick release.



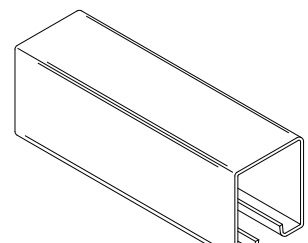
### END STOP & CORD SUPPORT

Steel clamp with eye to support operating line and prevent carriers from traveling beyond desired location. 1 pair required for overlapping tracks. **DO NOT USE WITH PIVOT DEVICES.**  
**No. 109** - Zinc plated.  
**No. 109B** - Black finish.



### No. 110A TRACK

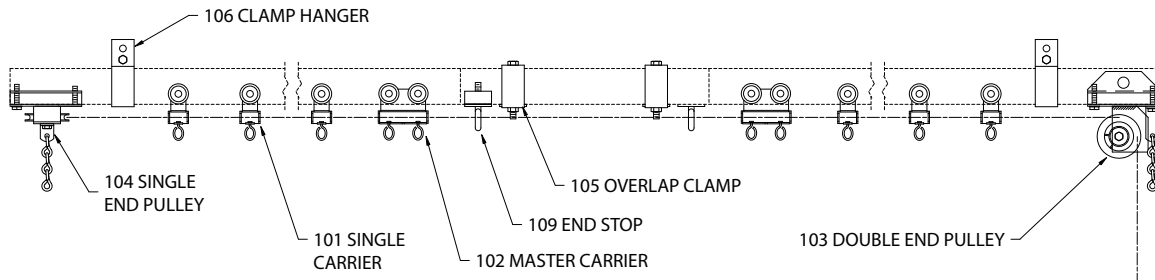
Mill finish 6063-T5 extruded aluminum 1-3/4" wide x 2" high, .080" thick. 16', 20' and 24' stock lengths.



### TRACK

16 gauge galvanized steel, roll-formed to 1-3/4" wide x 2" high.  
**No. 110S** - 12', 16', 18', and 20' stock lengths.  
**No. 110S-B** - Semi-gloss black powder coat finish. 16' and 20' stock lengths.

# STANDARD DUTY STRAIGHT TRACK 100 SERIES

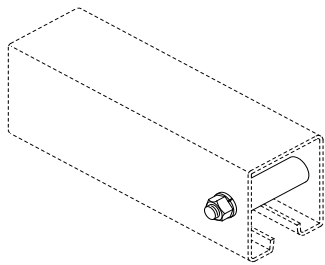


## COMPLETE TRACK MODEL NUMBERS

101A 116A  
101S 116S  
101W 116W

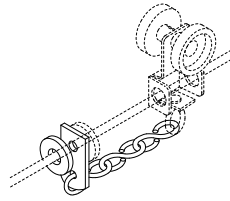
## BLACK COMPLETE TRACK MODEL NUMBERS

101SB 116SB  
101WB 116WB



### END STOP

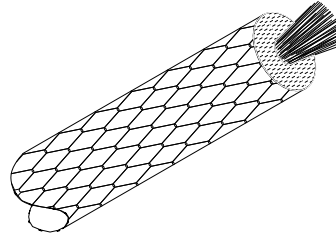
Bolt with horizontal pipe spacer to prevent carriers from traveling beyond desired location. For use with walk-along tracks and tracks with pivot devices.  
**No. 111** - Zinc plated.  
**No. 111B** - Black finish.



### REAR FOLD GUIDE

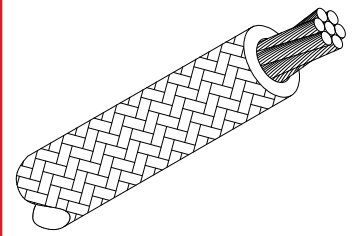
Allows curtain to fold at offstage edges. Supplied with 2 rubber bumpers.

**No. 112** - for use with 1/4" operating line.  
**No. 112B** - same as 112 in Black.  
**No. 113** - for use with 3/16" operating cable.  
**No. 113B** - same as 113 in Black.  
**Note: Cannot be used with No. 132 Overlap Master.**



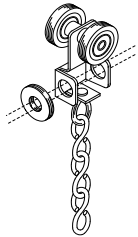
### No. 114 OPERATING LINE

1/4" diameter black polyester braided over Dyneema core for manual operation.



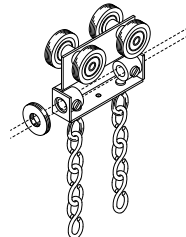
### OPERATING CABLE

Black polyester jacket braided over 3/32" specialty cord wire ropd. For use with motorized tracks.  
**No. 115** - 3/16" diameter  
**No. 125** - 1/4" diameter



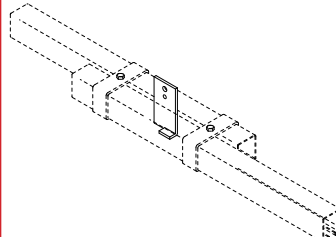
### SINGLE CARRIER

2 nylon-tired shielded ball bearing wheels riveted to steel body with swivel hook and trim chain. Supplied with 1 No. 130 rubber bumper.  
**No. 116** - Zinc plated.  
**No. 116B** - Black finish.



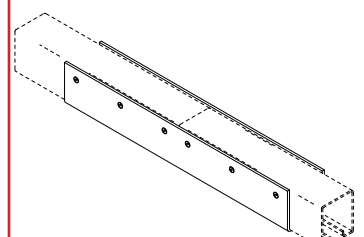
### MASTER CARRIER

4 nylon-tired shielded ball bearing wheels riveted to steel body with 2 swivel hooks and trim chains. Supplied with 2 rope clamps and 1 No. 130 rubber bumper. 1 pair required for overlapping tracks.  
**No. 117** - Zinc finish.  
**No. 117B** - Black finish.



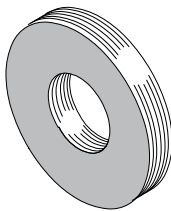
### CENTER PIPE SUPPORT

Formed steel bracket used to support tracks at overlap.  
**No. 126** - Zinc plated.  
**No. 126B** - Black finish.



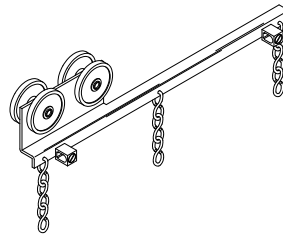
### CEILING SPLICE

To align and lock track sections together on ceiling mounted tracks. 1 pair pictured.  
**Note: Cannot be used with No. 132 Overlap Master, No. 137 Locking Master or No. 10 Pivot Device due to interference with the wheels.**  
**No. 127** - Zinc plated.  
**No. 127B** - Black finish.



### No. 130 ROUND RUBBER BUMPER

1/8" neoprene bumper placed between carriers on operating line to reduce noise.



### OVERLAP MASTER

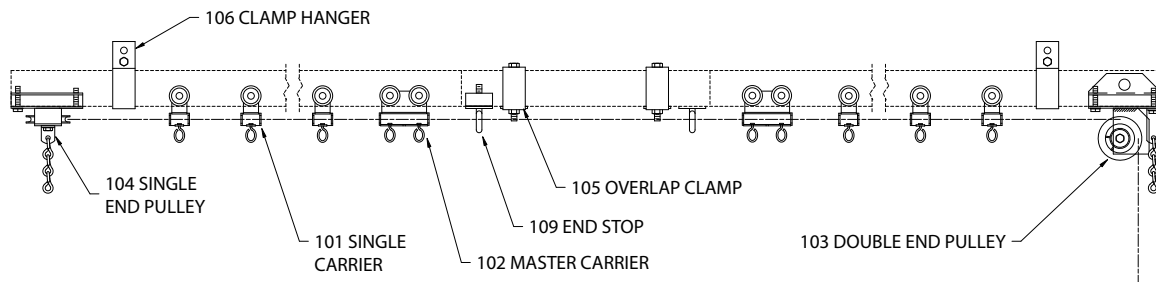
1-3/4" O.D. nylon wheels riveted to steel body with 9" offset arm. Used to overlap curtains on continuous track. Clamps provided to secure operating line. 1 pair required for overlapping curtains.  
**No. 132** - Zinc plated.  
**No. 132B** - Black finish.



### TRIM CHAIN

3 or 6 links No.10 single jack chain added to carriers to provide 3" or 6" of curtain height adjustment.  
**No. 135** - 3" Zinc plated.  
**No. 135B** - 3" Black finish.  
**No. 135-6** - 6" Zinc plated.  
**No. 135B-6** - 6" Black finish.

# STANDARD DUTY STRAIGHT TRACK 100 SERIES

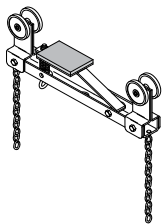


## COMPLETE TRACK MODEL NUMBERS

101A 116A  
101S 116S  
101W 116W

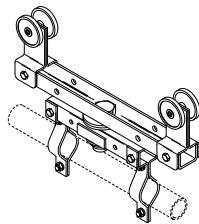
## BLACK COMPLETE TRACK MODEL NUMBERS

101SB 116SB  
101WB 116WB



### No. 137 BLACK LOCKING MASTER CARRIER

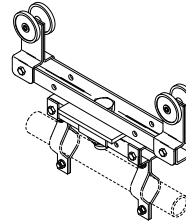
Heavy steel construction with nylon wheels and brake to keep master carrier in desired location. Equipped with swivels and trim chains for curtain attachment. Note: All carriers used with this device must have a trim chain of 6" total length.



### PIVOT DEVICE

Heavy steel construction with nylon wheels. Supplied with brackets for 1-3/8" O.D. pipe or tubing (6' max. recommended length). Allows masking draperies to be rotated to any angle.  
Working Load Limit: 60 pounds.

**No. 10** - Zinc plated.  
**No. 10B** - Black finish

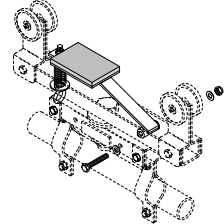


### INDEXING PIVOT DEVICE

Pivot device with special plate to index rotation at 22-1/2 degree increments. Supplied with brackets for 1-3/8" O.D. pipe or tubing (6' max. recommended length).

Working Load Limit: 60 pounds.

**No. 10X** - Zinc plated.  
**No. 10XB** - Black finish.



### BRAKE KIT

Spring equipped arm with neoprene pad. Add to pivot device to prevent undesired movement along track.

**No. 10BK** - Zinc plated.  
**No. 10BKB** - Black finish.

## GENERAL SPECIFICATIONS:

Provide **Model 101S** as manufactured by H & H Specialties Inc., South El Monte, CA.

Track shall be 16 gauge galvanized steel, roll-formed to 1-3/4" wide X 2" high with continuous slot in bottom. Provide unspliced in lengths up to 26'.

Suspend track with two-piece clamp hanger formed from 11 gauge steel. Provide 2' overlap at center, rigidly separated by two overlap clamps. Install end stop with cord support at each overlapping track end. Where lengths exceed 26', connect tracks with 12" long, two-piece splicing clamp of 12 gauge steel.

Provide single carriers, spaced on 12" centers, constructed of two polyethylene wheels fastened parallel to formed steel carrier body with swivel hook for attachment of curtain.

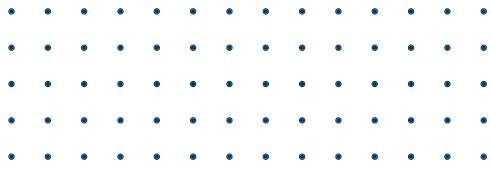
Master carriers shall be 4-wheel assemblies with formed steel bodies and two swivel hooks each. Connect to operating line with two machined steel cord clamps captured within each body.

Single and double end pulleys shall clamp securely to the underside of the track channel and shall contain 2-1/2" diameter sheaves enclosed in steel housings to prevent operating line from escaping the grooves. MD Nylon sheaves shall be molded around shielded and greased ball bearings and grooved to accommodate up to 1/4" operating line.

Provide floor block in 12 gauge steel housing containing 4" MD Nylon shielded ball bearing sheave. Sheave axle shall lock at any point within 9" vertical slots to allow tension adjustment of operating line.

Black operating line shall be 1/4" diameter, stretch-resistant rope with spun polyester outer jacket braided over Dyneema core.

All steel components shall be zinc plated to resist corrosion.



# Track Component Guide

## 100 SERIES

### 100 Series Complete Track

For COMPLETE tracks supplied with aluminum, substitute 110A for 110S.

PART No.	DESCRIPTION	101S	101W	116S	116W
101	Single Carrier	•	•		
102	Master Carrier	•	•		
103	Double End Pulley	•		•	
104	Single End Pulley	•		•	
105	Overlap Clamp	•		•	
106	Clamp Hanger	•	•	•	•
107*	Splice	•	•	•	•
108	Black Adjustable Floor Block	•		•	
109	End Stop & Cord Support	•	•	•	•
110S*	Track	•	•	•	•
114	1/4" Operating Line	•		•	
116	Nylon B.B. Single Carrier			•	•

\* Track lengths and splices supplied as required from stock sizes.

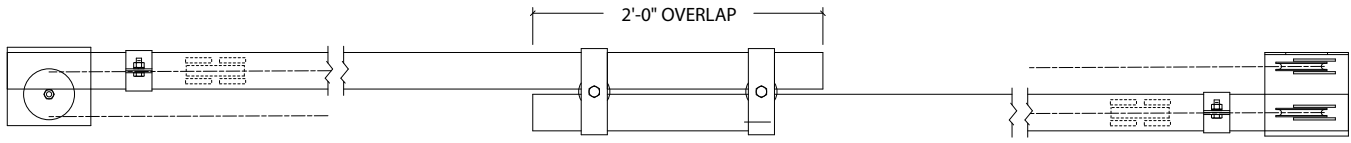
### 100 Series Black Complete Track

Note: Aluminum track is not offered in black

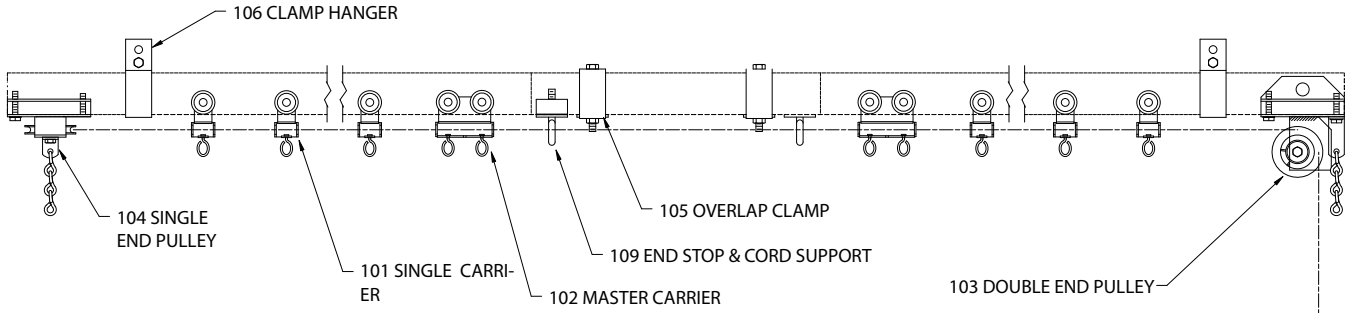
PART No.	DESCRIPTION	101SB	101WB	116SB	116WB
101B	Black Single Carrier	•	•		
102B	Black Master Carrier	•	•		
103B	Black Double End Pulley	•		•	
104B	Black Single End Pulley	•		•	
105B	Black Overlap Clamp	•		•	
106B	Black Clamp Hanger	•	•	•	•
107B*	Black Splice	•	•	•	•
108	Black Adjustable Floor Block	•		•	
109B	Black End Stop & Cord Support	•	•	•	•
110S-B*	Black Track	•	•	•	•
114	1/4" Operating Line	•		•	
116B	Black Nylon B.B. Single Carrier			•	•
117B	Black Nylon B.B. Master Carrier				

\* Track lengths and splices supplied as required from stock sizes.

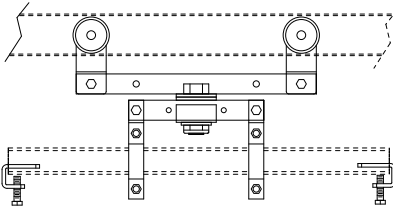
# STANDARD DUTY STRAIGHT TRACK 100 SERIES



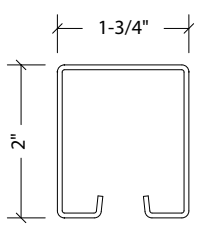
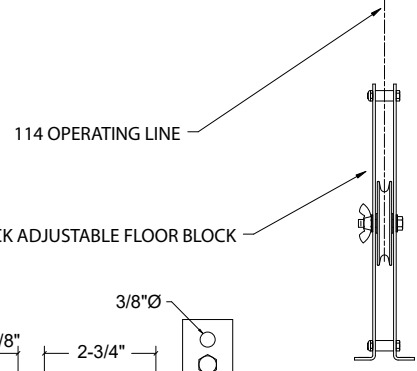
**PLAN - MODEL 101S COMPLETE TRACK**



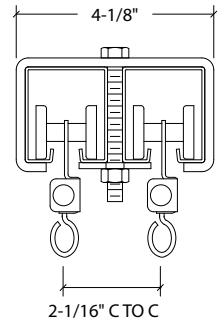
**ELEVATION - MODEL 101S COMPLETE TRACK**



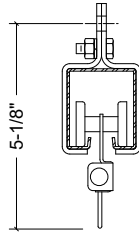
**10 PIVOT DEVICE**



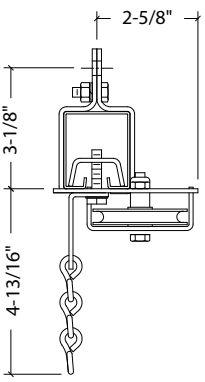
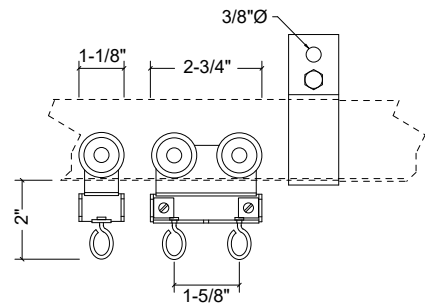
**110 TRACK**



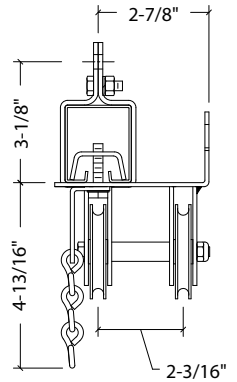
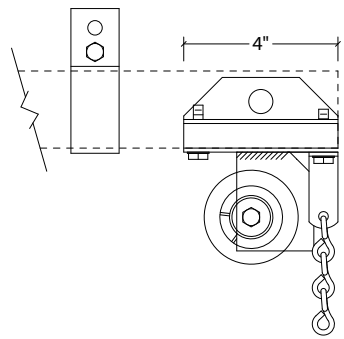
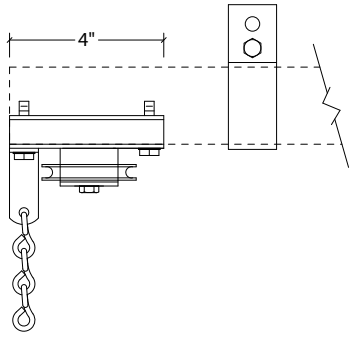
**TRACKS AT CENTER OVERLAP**



**101 SINGLE CARRIER AND 122 MASTER CARRIER**



**104 SINGLE END PULLEY**



**103 DOUBLE END PULLEY**