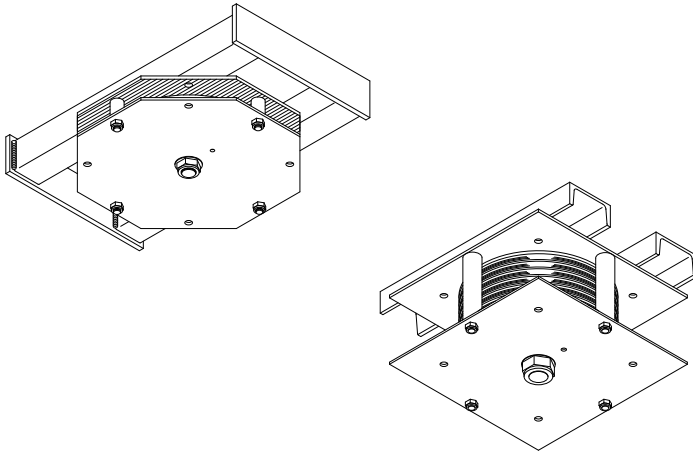


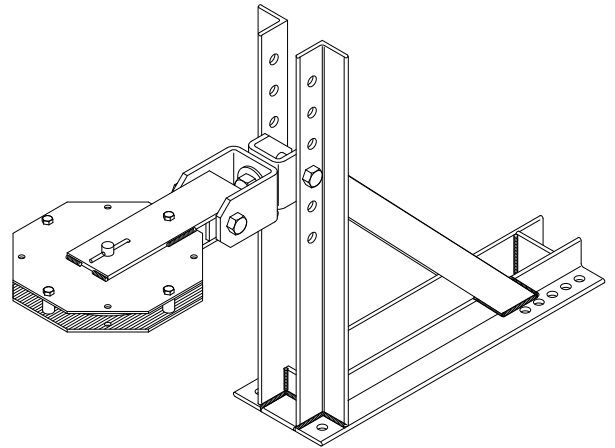
Series 81 MULE BLOCK

This style of mule block attaches to the bottom flange of the roof support structure. Each rigid sheave housing contains a single or multi-groove sheave with a standardized quantity of cable grooves. Heavy offset clips and bolts are supplied for attachment. Beam flange width and thickness must be specified at time of ordering.



Series 81 SWIVEL MULE BLOCK

This swivel/pivot mechanism enables the mule block to move up/down and left/right for maximum flexibility. A structural angle stand is provided with a series of holes to accommodate a wide variety of mounting configurations. Each sheave housing contains a single or multi-groove sheave with a standardized quantity of cable grooves. Bolts are supplied to attach the stand to the grid.



Model Number	Sheave Diameter	Sheave Material	Cable Groove Quantity	Cable	Bearing	WLL *
1681N19	6"	Nylatron GS	1	3/16"	5/8" BB	275#
1881C25	8"	Cast Iron	1	1/4"	5/8" BB	325#
1881N25	8"	Nylatron GS	1	1/4"	5/8" BB	500#
4881C25	8"	Cast Iron	4	1/4"	11/16" TRB	1000#
6681N19	6"	Nylatron GS	6	3/16"	1" BB	580#
8881C25	8"	Cast Iron	8	1/4"	1" TRB	1250#
8881N25	8"	Nylatron GS	8	1/4"	1" TRB	1400#
1683N19	6"	Nylatron GS	1	3/16"	5/8" BB	275#
1883C25	8"	Cast Iron	1	1/4"	5/8" BB	325#
1883N25	8"	Nylatron GS	1	1/4"	5/8" BB	500#
4883C25	8"	Cast Iron	4	1/4"	11/16" TRB	1000#
6683N19	6"	Nylatron GS	6	3/16"	1" BB	850#
8883C25	8"	Cast Iron	8	1/4"	1" TRB	1250#
8883N25	8"	Nylatron GS	8	1/4"	1" TRB	1400#

* Weight in pounds @ 300 ft/min, assuming 180° cable wrap. Field welding to building structure may be required to attain full load rating. Consult factory for specific recommendations.