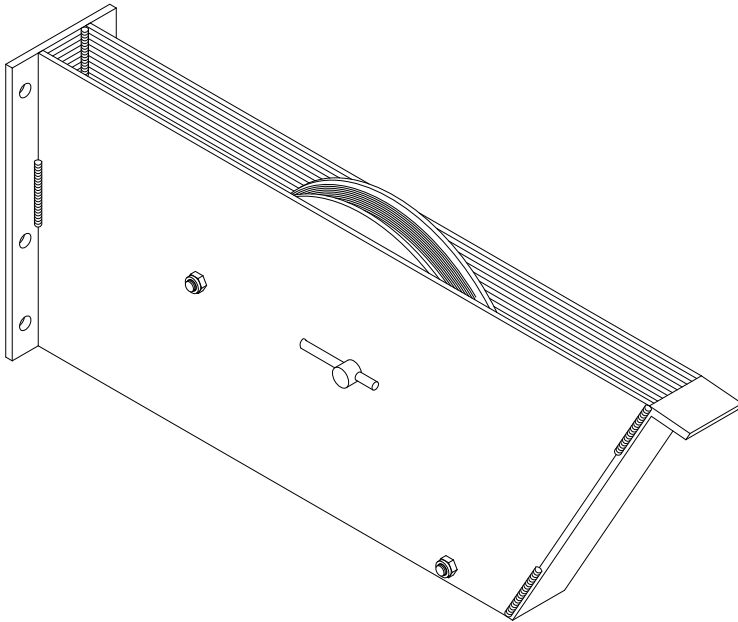
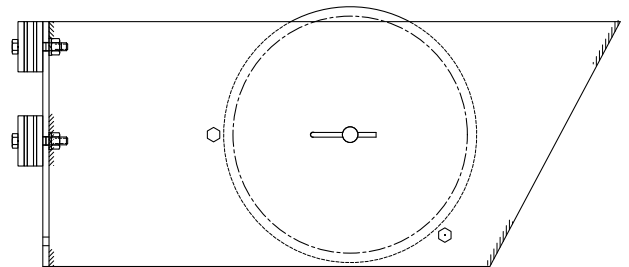


Series 70 TENSION BLOCK

Used in tee or jay bar mounting. The heavy steel housing is designed to provide automatic tension on the purchase line. Guides may be mounted to provide either a self locking or free-floating operation.



Model Number	Sheave Diameter	Unit Weight
1070C75	10"	42#
1270C75	12"	51#



Series 70G- TENSION BLOCK GUIDE SHOE

Tension block guide shoes are constructed of high density polyethylene guides with full width 1/4" thick steel backing plates. Guides may be mounted to provide either self-locking or free-floating operation. The guide material's unique characteristics provide years of trouble-free service. Guide assemblies are available in standard spacings of 6", 8", 9", and 12" centers.

Tension Guide Number	Tee or Jay Bar* Spacing	Unit Weight per Pair
70G-6	6"	3.6#
70G-8	8"	4.8#
70G-9	9"	5.6#
70G-12	12"	7.8#

*1-1/2" x 1-1/2" x 3/16"

