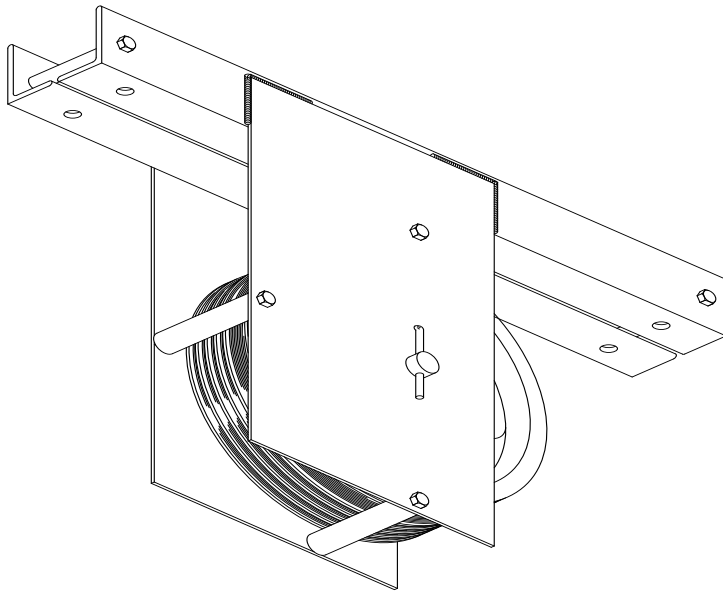
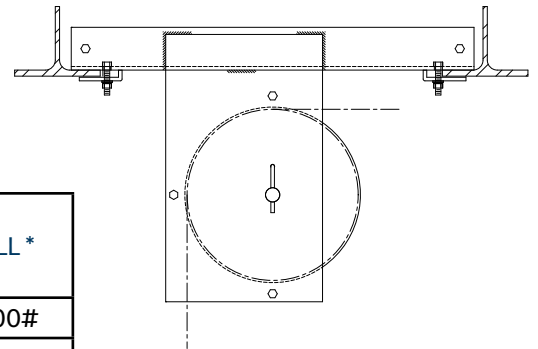


Series 55 UNDERHUNG HEAD BLOCK



Series 55 head blocks are designed to mount to the top side of the bottom flanges of the head beams. Each rigid steel housing contains a multi-groove sheave with a standardized quantity of cable grooves and one purchase line groove. Sheaves are available in cast iron and Nylatron GSM

Each assembly is fabricated to fit a specific beam size and spacing, therefore, accurate field dimensions are required when ordering. Holes are located in the base angles for the attachment of heavy offset clips and mounting bolts to the support structure.



Typical Mounting Application

Model Number	Sheave Diameter	Sheave Material	Cable Groove Quantity	Cable	Bearing	WLL *
6855N19	8"	Nylatron GS	6	3/16"	1" BB	1200#
7855C25	8"	Cast Iron	7	1/4"	1" BB	1800#
7855N25	8"	Nylatron GS	7	1/4"	1" BB	2000#
71255C25	12"	Cast Iron	7	1/4"	1" BB	1800#
71255N25	12"	Nylatron GS	7	1/4"	1" BB	2400#
101255C25	12"	Cast Iron	10	1/4"	1" BB	1800#
101255N25	12"	Nylatron GS	10	1/4"	1" BB	2400#

BB - Sealed precision ball bearings.

TRB - Tapered roller bearings.

All sheaves include one groove for 3/4" purchase line. * Weight in pounds @ 300 ft/min.