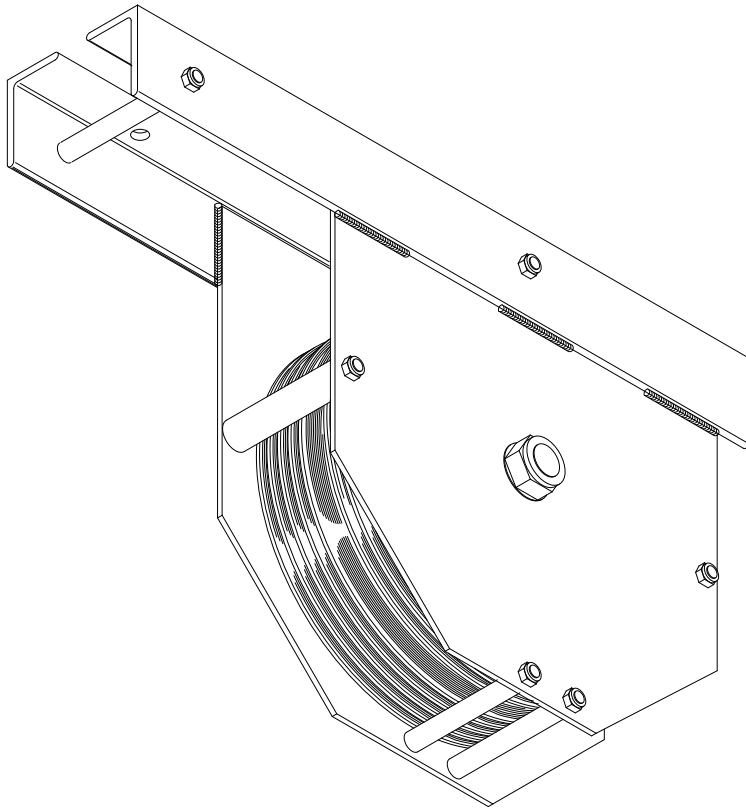


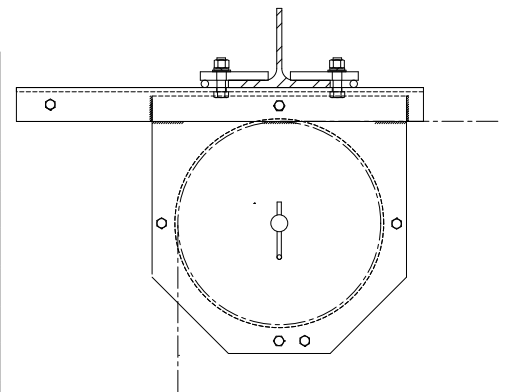
Series 51 UNDERHUNG HEAD BLOCK

Series 51 head blocks are designed to clamp to the bottom of steel beams. Each rigid steel housing contains a multi-groove sheave with a standardized quantity of cable grooves and one purchase line groove. Sheaves are available in cast iron and Nylatron GSM.

Each assembly is fabricated to fit a specific beam size. Mounting holes are generally located such that the sheave is positioned centered under the support beam. Heavy offset clips and bolts are supplied for attachment to the support structure. Beam flange width and thickness must be specified at time of ordering.



Model Number	Sheave Diameter	Sheave Material	Cable Groove Quantity	Cable	Bearing	WLL *
6851N19	8"	Nylatron GS	6	3/16"	1" BB	1200#
7851C25	8"	Cast Iron	7	1/4"	1" BB	1800#
7851N25	8"	Nylatron GS	7	1/4"	1" BB	2000#
61051N19	10"	Nylatron GS	6	3/16"	1" BB	1400#
71251C25	12"	Cast Iron	7	1/4"	1" BB	1800#
71251N25	12"	Nylatron GS	7	1/4"	1" BB	2400#
101251C25	12"	Cast Iron	10	1/4"	1" BB	1800#
101251N25	12"	Nylatron GS	10	1/4"	1" BB	2400#



Typical Mounting Application

BB - Sealed precision ball bearings.

TRB - Tapered roller bearings.

All sheaves include one groove for 3/4" purchase line. * Weight in pounds @ 300 ft/min.