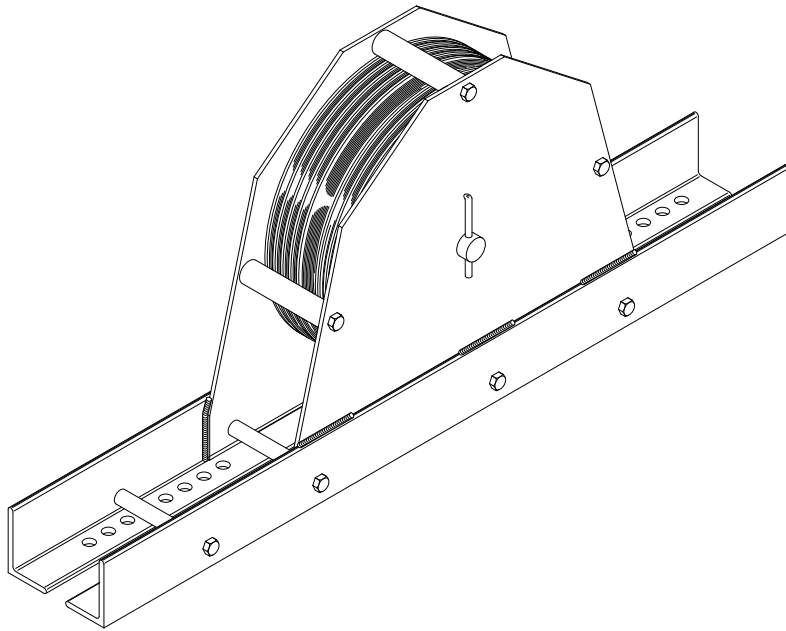
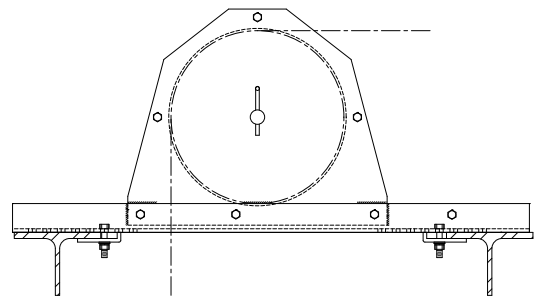


Series 50 UPRIGHT HEAD BLOCK



Series 50 head blocks are designed to mount on top of head beams or other support structure. Each rigid steel housing contains a multi-groove sheave with a standardized quantity of cable grooves and one purchase line groove. Sheaves are available in cast iron and Nylatron GSM.

Each base angle is punched with a series of holes to accommodate a wide variety of head beam configurations. Mounting clips and bolts are supplied for attachment to the support structure.



Typical Mounting Application

Model Number	Sheave Diameter	Sheave Material	Cable Groove Quantity	Cable	Bearing	WLL *
6850N19	8"	Nylatron GS	6	3/16"	1" BB	1200#
7850C25	8"	Cast Iron	7	1/4"	1" BB	1800#
7850N25	8"	Nylatron GS	7	1/4"	1" BB	2000#
61050N19	10"	Nylatron GS	6	3/16"	1" BB	1400#
71250C25	12"	Cast Iron	7	1/4"	1" BB	1800#
71250N25	12"	Nylatron GS	7	1/4"	1" BB	2400#
101250C25	12"	Cast Iron	10	1/4"	1" BB	1800#
101250N25	12"	Nylatron GS	10	1/4"	1" BB	2400#
71650C38	16"	Cast Iron	7	3/8"	1-3/8" BB	2500#
91650C25	16"	Cast Iron	9	1/4"	13/8" BB	2500#

BB - Sealed precision ball bearings.

TRB - Tapered roller bearings.

All sheaves include one groove for 3/4" purchase line. * Weight in pounds @ 300 ft/min.