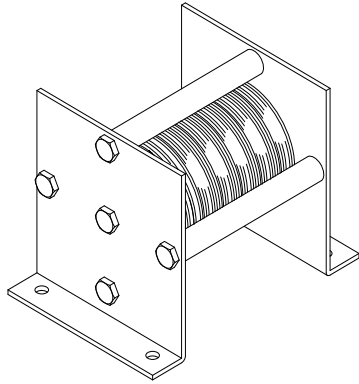
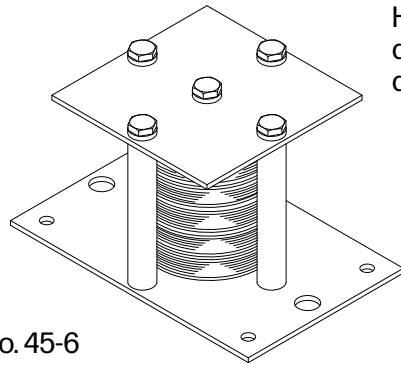


LIGHT DUTY RIGGING



No. 44-6



No. 45-6

LIGHT-DUTY RIGGING

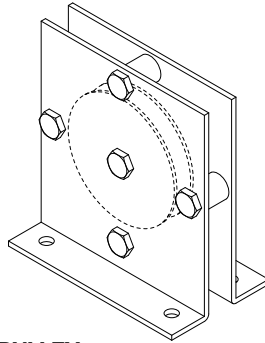
Light-duty stand-up pulleys and mule pulleys are designed for rigging lift curtains, gym dividers, and other lightweight loads. Rugged steel housings contain 2-1/2" or 4" diameter MD Nylon sheaves with shielded ball bearings. Each style is available in single and multiple sheave configurations.

H & H Specialties also manufactures many standard and custom items for medium and heavy-duty rigging applications. Contact the factory for further information.

Working Load Limits* (At 150 ft/min)

Model No.	WLL	Model No.	WLL
44-1	25#	44-6	110#
44-2	45#	44-7	120#
44-3	65#	44-8	125#
44-4	80#	44-9	125#
44-5	95#	44-10	125#

* Max. load on any individual sheave: 25#



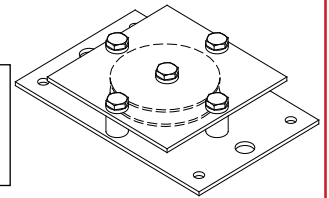
44 SERIES STAND-UP PULLEY

2-1/2" diameter MD Nylon sheaves with shielded ball bearings mounted between 12 gauge steel side plates. Grooved for 1/4" rope. Available up to 10 sheaves.

Working Load Limits* (At 150 ft/min)

Model No.	WLL	Model No.	WLL
45-1	25#	45-5	90#
45-2	45#	45-6	100#
45-3	65#	45-7	125#
45-4	80#	45-8	125#

* Max. load on any individual sheave: 25#



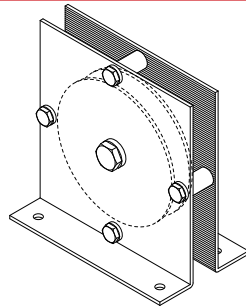
45 SERIES MULE PULLEY

2-1/2" diameter MD Nylon sheaves with shielded ball bearings flush mounted to 10 gauge steel plate. Grooved for 1/4" rope. Available up to 8 sheaves.

Working Load Limits* (At 150 ft/min)

Model No.	WLL	Model No.	WLL
44-1	25#	44-6	110#
44-2	45#	44-7	120#
44-3	65#	44-8	125#
44-4	80#	44-9	125#
44-5	95#	44-10	125#

* Max. load on any individual sheave: 25#



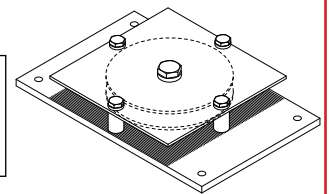
44 SERIES STAND-UP PULLEY

2-1/2" diameter MD Nylon sheaves with shielded ball bearings mounted between 12 gauge steel side plates. Grooved for 1/4" rope. Available up to 10 sheaves.

Working Load Limits* (At 150 ft/min)

Model No.	WLL	Model No.	WLL
45-1	25#	45-5	90#
45-2	45#	45-6	100#
45-3	65#	45-7	125#
45-4	80#	45-8	125#

* Max. load on any individual sheave: 25#

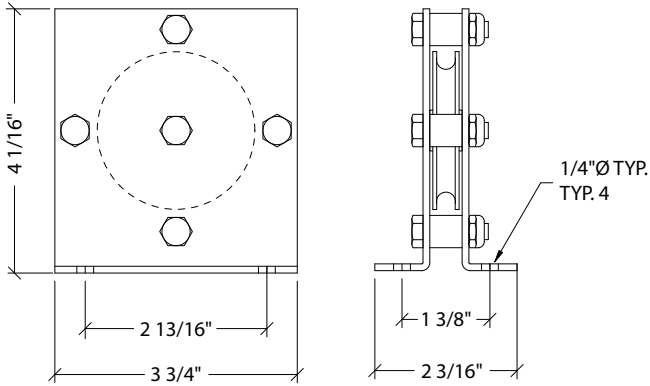


45 SERIES MULE PULLEY

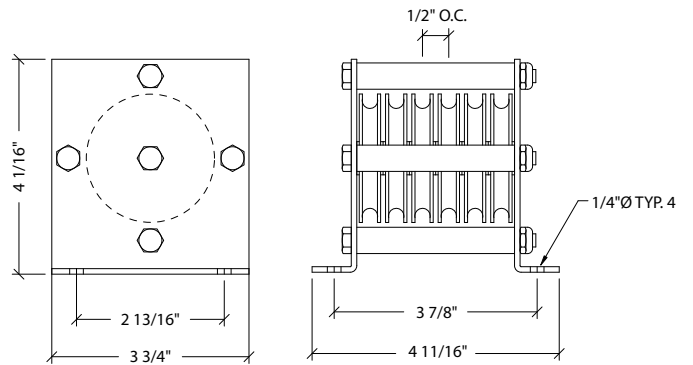
2-1/2" diameter MD Nylon sheaves with shielded ball bearings flush mounted to 10 gauge steel plate. Grooved for 1/4" rope. Available up to 8 sheaves.

DIMENSION DRAWINGS

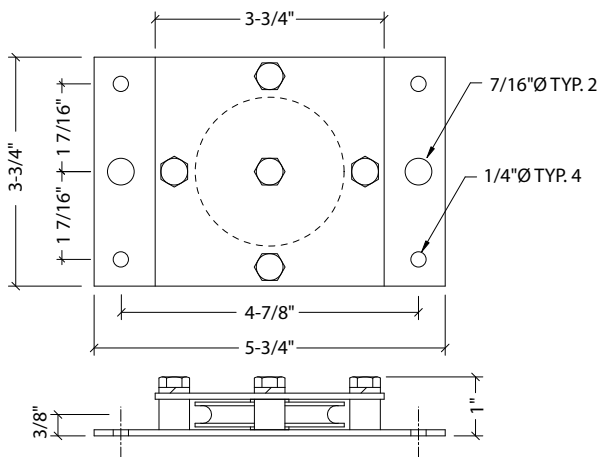
LIGHT DUTY RIGGING



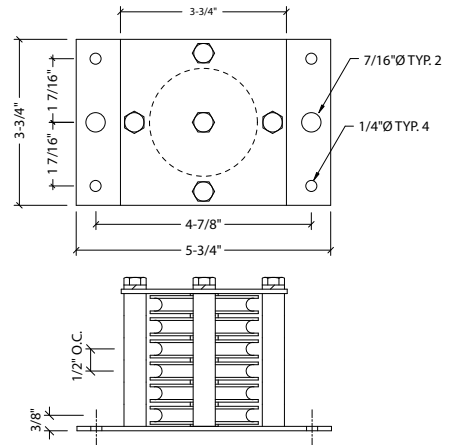
44-1 STAND-UP PULLEY



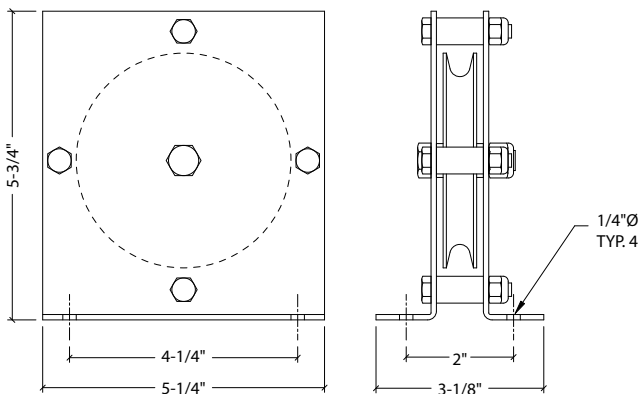
44-6 STAND-UP PULLEY



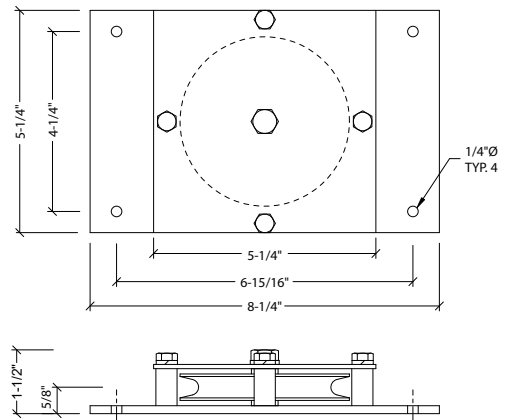
45-1 MULE PULLEY



45-6 MULE PULLEY



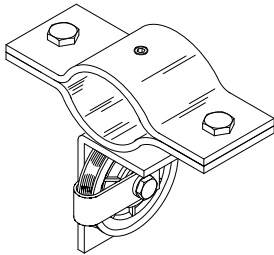
46-1 STAND-UP PULLEY



47-1 MULE PULLEY

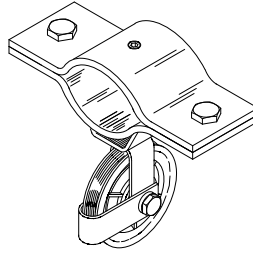
LIFT CURTAIN RIGGING

Special light-duty pulleys are housed in assemblies designed to mount to 1-1/2" pipe batten, providing a method of rigging lift curtains whether they are straight, curved, or serpentine in layout. Idler sheaves may be added to guide cables around curves.



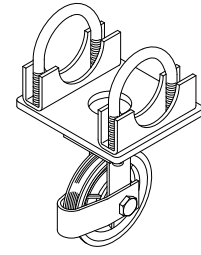
No. 48 LIFT CURTAIN PULLEY

2-1/2" MD Nylon sheave with shielded ball bearing in steel housing for mounting to 1-1/2" pipe. Working Load Limit: 25#



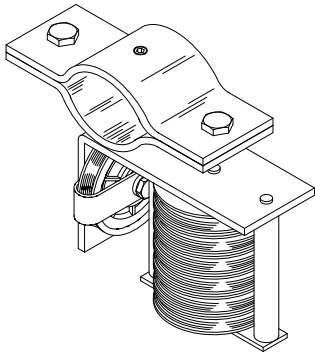
No. 48S LIFT CURTAIN SWIVEL

2-1/2" MD Nylon sheave with shielded ball bearing in steel housing for mounting to 1-1/2" pipe. Sheave swivels 360 degrees. Working Load Limit: 25#



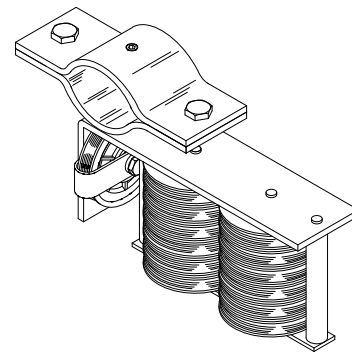
LIFT CURTAIN SWIVEL

2-1/2" MD Nylon sheave with shielded ball bearing in steel housing.
58S - Mounts to Strut.
58S-1 - Mounts to 1" pipe.
58S-1.5 - Mounts to 1-1/2" pipe.
 Working Load Limit: 25#



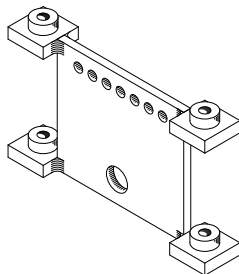
No. 48-6 LIFT PULLEY WITH 6 IDLERS

No. 48 lift curtain pulley with the addition of 1 column of horizontal idler sheaves. Suffix indicates number of idler sheaves, up to 6.



No. 48-12 LIFT PULLEY WITH 12 IDLERS

No. 48 lift curtain pulley with the addition of 2 columns of horizontal idler sheaves. Suffix indicates number of idler sheaves, up to 12.



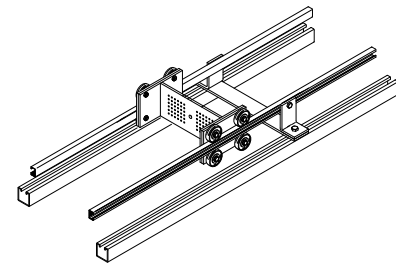
No. 42 WIRE GUIDE CLEWS

Clews combine lift lines into single haul line. MD Nylon bushings provided for smooth, quiet operation.

42-6 - 6 lift lines. Working Load Limit: 25#

42-12 - 12 lift lines. Working Load Limit: 25#

For clews with higher working loads, please consult factory.



No. 43 ROLLER GUIDE CLEW

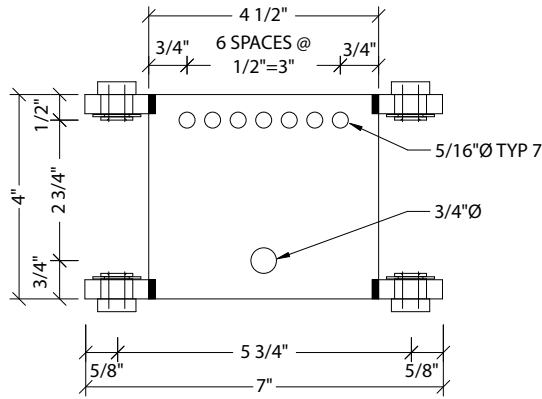
Multi-line clew constructed of 1/4" steel plate supported by 8 urethane-tired sealed ball bearing wheels. HDPE glide strips reduce friction and noise along a rigidly supported C-channel frame. Suffix indicates clew travel in feet.

No. 43x15 - 15 foot clew travel. **No. 43x25** - 25 foot clew travel.

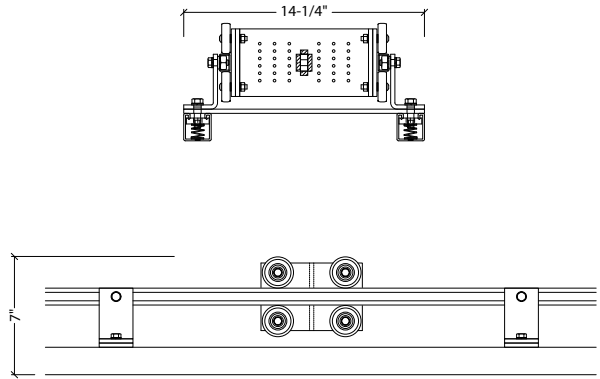
No. 43x20 - 20 foot clew travel. **No. 43x30** - 30 foot clew travel.

DIMENSION DRAWINGS

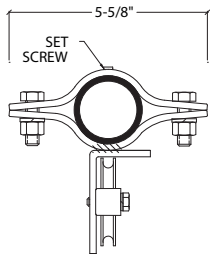
LIFT CURTAIN RIGGING



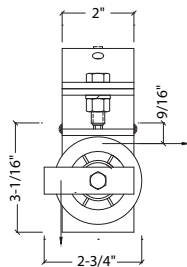
42-6 WIRE GUIDE CLEW



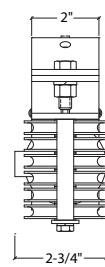
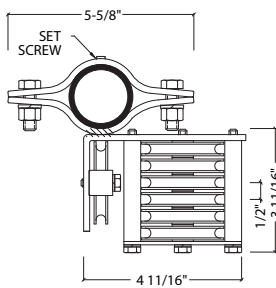
43 ROLLER GUIDE CLEW



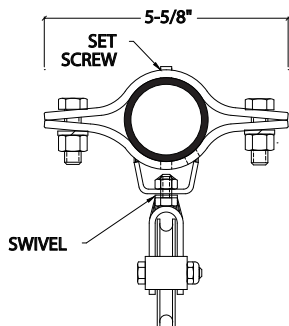
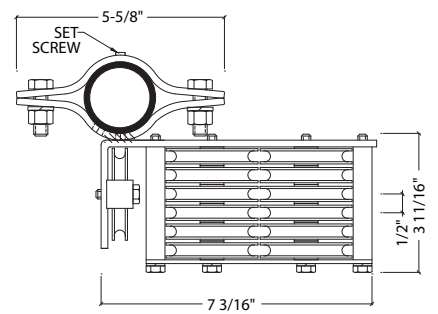
48 LIFT CURTAIN PULLEY



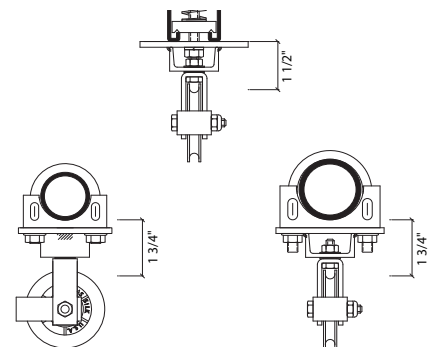
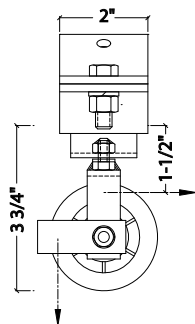
48-6 LIFT PULLEY



48-12 LIFT PULLEY



48S LIFT CURTAIN SWIVEL



58S SERIES LIFT CURTAIN SWIVEL