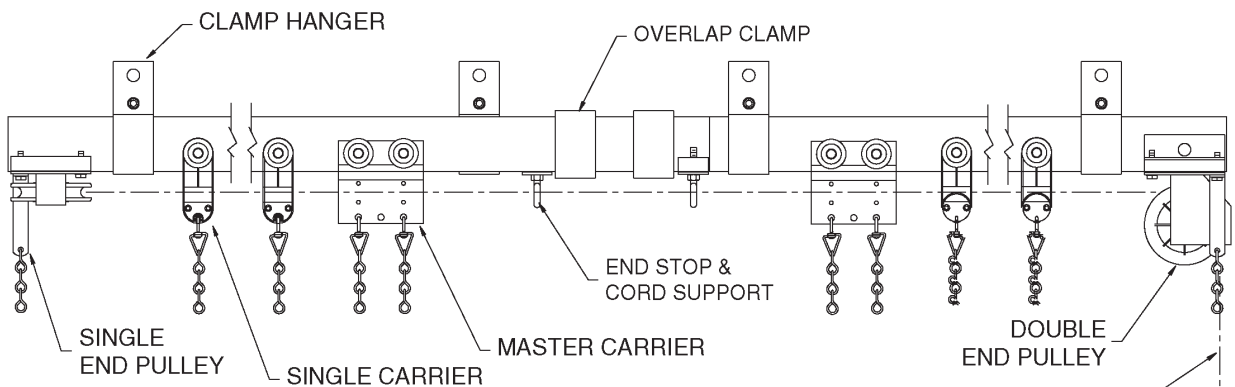
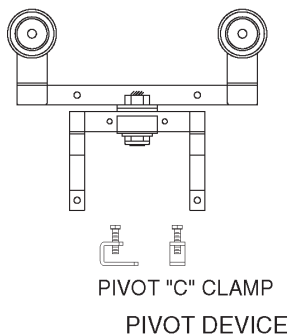


HEAVY DUTY STRAIGHT TRACK - PLAN



HEAVY DUTY STRAIGHT TRACK - ELEVATION



OPERATING LINE (3/8")

ADJUSTABLE FLOOR BLOCK

Individual stage curtain tracks are normally ordered on a per-foot basis and supplied with the standard group of components as shown above. These include track, one single carrier per foot, one pair of master carriers, double and single end pulleys, one set of overlap clamps, clamp hangers, floor block, one pair of end stops and operating line. This is called a "complete track." H & H Specialties Model 400 Track shown above is a heavy duty straight track for curtains up to 60 feet.